



Now enjoy internet radio in your car!

With the vTuner for Alpine iPhone app, you'll be able to choose from thousands of internet radio stations from around the world. Listen to your favourite music stations, or try new ones in any genre. Naturally, you can also choose talk shows and podcasts. The app makes it easy to browse or search for specific stations. And to help you find new music and news stations, vTuner provides personalised recommendations and editorial selections. vTuner internet radio: it's a whole new world of entertainment in your car.



Compatible with the CDE/iDE-178BT, CDE-177BT and CDE-175R.

Driving Mobile Media Solutions™



www.alpine-europe.com

ALPINE ELECTRONICS (EUROPE) GmbH
 Wilhelm-Wagenfeld-Straße 1-3, 80807 München, Germany
 Tel : +49 / (0) 89-32 42 64-0 Fax : +49 / (0) 89-32 42 64-241

ALPINE ELECTRONICS, INC.
 20-1 Yoshima Kogyo Danchi, Iwaki, Fukushima 970-1192, Japan
 Tel : +81-246-36-4111 Fax : +81-246-36-8309

<http://www.alpine.com>

Printed in Belgium

GBAOE14

ALPINE

Mobile Media Solutions



2014-2015 GENERAL CATALOGUE

INDEX

	Navigation Solutions 2
To Alpine, "navigation" means more than getting from A to B. One Look Navi makes driving more convenient and enjoyable.	
	Perfect F.I.T. 6
Alpine model-specific kits give you perfect 8" monitor dashboard integration, both appearance and operation.	
	Mobile Media Stations 10
Disc, smartphone, USB and more. Enjoy great sound and vivid images from all your favourite AV media.	
	Camera Systems 12
Discover how much safer and easier driving becomes with one of Alpine's high quality and versatile camera systems.	
	Rear Seat Entertainment 14
Trips are more enjoyable for those in the rear seats with wide-screen monitors for movies, music, games and more.	
	Head Units 16
The best head units on the market, with great features like sound tuning via smartphone and Facebook linking.	
	Sound Solutions 24
Amplifiers, speakers and processors to satisfy your desire for higher power and clarity with sound customisation.	

KEY TECHNOLOGIES

Made for iPod iPhone
 Alpine is the leader in providing iPod/iPhone integration, ensuring optimum sound quality and outstanding convenience.

APP DIRECT
 Connect your iPhone via USB and App Direct will let you listen to sound from many apps through your system speakers. You get full control from the iPhone's touch screen and the iPhone stays fully operational.

Bluetooth
 Fully wireless, hands-free connection and audio streaming between your Bluetooth®-enabled mobile phone and an Alpine Head Unit.

BT PLUS
 BT Plus takes wireless Bluetooth® connectivity to the next level with many advanced phone operation and phonebook functions, and easier control of music search and playback functions.

MirrorLink
 MirrorLink™ is a widely accepted connectivity standard that links smartphones to mobile media systems, offering seamless and convenient use of navigation, music playback and other entertainment and communication apps.

vTuner internet radio
 Download the vTuner for Alpine app to your iPhone, connect it to a Head Unit that supports vTuner Internet Radio, and enjoy high quality streaming with a huge choice of online radio stations from around the world.

DAB
 Solutions with built-in DAB tuners let you enjoy the superb sound clarity of digital radio. Service Search and automatic switching between DAB and RDS are available in some areas.

BASS ENGINE
 This advanced bass customisation control automatically adjusts frequency cutoff, Q factor and subwoofer level, while maintaining optimum overall sound balance. It also offers six presets for quick selection.

USB
 A USB terminal makes it simple, fast and convenient to enjoy all the music you and your friends have stored on USB sticks. High speed digital connection ensures maximum sound quality.



Alpine Tunelt App 2.0

Tens of thousands of Alpine fans have downloaded the Tunelt app and use it to tune their sound and stay connected with Facebook. It's the best way to tune the sound of your car and receive Facebook messages in a safe and convenient way while you drive. And now it's even better! Try out Tunelt 2.0 today. Available for iPhone and Android phones.



New in Tunelt 2.0 is the ability to control BASS ENGINE SQ settings within the app and also select the Alpine speaker models that you are using in your car, so the crossover and other settings are done automatically to match your system. You can also set the car type you drive (SUV, etc.) so the system can make the initial settings even more accurate. The App menu is also available in more languages. As in the previous version, you can adjust Digital Time Correction, 9-Band Parametric EQ and more. Then, after making your sound settings, upload them to the Alpine Cloud Server to share them with other Alpine fans. You can also see and rate other people's settings. Download high rated or interesting settings and try them in your car, and check back often to see new ones.

Facebook in your car!

Tunelt 2.0 makes it more convenient to stay in touch. Not only will you see new Facebook messages, you can use TTS to listen to your messages, picture comments and time-line posts while you drive. And you can LIKE messages with one push. TTS is now available in German, English and French. Spanish will be added with 2.1.



Navigation Solutions

Super-size 8-inch monitor for big screen navigation and entertainment.



ONE LOOK NAVI

X800D-U
ADVANCED NAVI STATION



Video: 8" (20.3 cm) WVGA touch screen • iPod video playback (requires KCU-461IV) • DVD±R/±RW/DivX Playback • USB Video Playback • Dual Zone Playback (independent A/V output for rear monitors) **Audio:** 4 x 50W High Power Amp • CD-RV-RW/WMA/MP3/AAC Playback • Built-in DAB/DAB+/DMB Tuner • Tunelt Ready (with iPhone and Android) • BASS ENGINE SQ • 3 PreOuts (4 Volts) • 9-band Parametric EQ • Preset Equaliser (10 modes) • 6-Channel Digital Time Correction • Crossover settings • MediaXpander • 24-bit DAC **Navigation:** Built-in high-performance iGO PRIMO 2 Navigation System • 46 Western and Eastern European Countries covered • Built-in TMC Tuner providing Advanced TMC Functions • Voice Guidance in 29 Languages • Text to Speech (TTS) in 15 languages • High resolution maps with Anti-Aliasing and 3D landmark icons • 3D City maps • Enhanced POI database • GPS Antenna included **Connectivity:** MirrorLink™ Technology • Digital Optical Output • Made for iPhone and iPod • USB connection • Input for parking sensor and air condition settings display interface (sold separately) • Built-in Bluetooth® Module • AVRCP Ver.1.4 compatible • Simple Secure Pairing (SSP) • Direct camera port (with adjustable distance guides) • DVB-T Tuner Ready • Steering Wheel Remote Control Ready • Remote Control Ready • Vehicle Display Interface Ready • 2x Rear A/V input, 1x output **General Features:** 3rd Generation One Look User Interface • My Favourites Customisation • Microphone Included • Menu Language Selection (18 languages) • Anti-theft security code • USB Cable Included • 5 Background colours selectable

One Look Navi platform now has many more features for added value.

Tunelt App for Tuning and Keeping in Touch

The X800D-U works with Alpine's cool and convenient Tunelt app to bring you custom sound tuning features right from your smartphone. You can upload your sound settings to the Alpine Cloud Server to share them with other Alpine fans, and see their settings. The app also displays Facebook messages, lets you "Like" them and even reads them to you!



DAB Tuner for Superior Radio Sound Quality

Now you can enjoy radio with excellent digital sound quality. Built-in DAB, DAB+ and DMB tuners use the latest tuning technology to deliver consistent sound clarity, no matter where you're driving. In areas where DAB is not available, the unit will automatically switch between RDS and DAB, for continuous high quality reception. It also offers Service Search and a DAB antenna power supply. An optional Alpine antenna is available.



Connection for Alpine Climate Control and Parking Sensor Interfaces

Many original factory head units have climate control and parking displays, which will be lost if the unit is removed. With the X800D-U, this is not a problem, as it supports Alpine interfaces that provide attractive graphic displays of climate control and parking information. This ensures full integration of the Alpine system with the car for greater driving safety and convenience.



Parking sensor displays distances to the front and rear, making it easier and safer to manoeuvre into and out of parking spaces.

Camera display gives you a clear view as you park. Front and rear distances are also shown. The system automatically mutes on reverse to hear the sensor sound.

Full climate and heater contour display including air vent settings and seat heater display makes it easy to achieve desired settings.



New One Look Navi Interface

One Look Navi now has a 3rd generation interface with even better graphics so everything practically jumps off the screen at you. You get the information you want at a glance, and controlling your system is more convenient.

Navigation Solutions

8-inch high-visibility monitor and all the convenience of One Look Navi.



ONE LOOK NAVI

INE-W928R
ADVANCED NAVI STATION



Video: 8" (20.3 cm) WVGA touch screen • iPod video playback (requires KCU-461IV) • DVD±R/±RW/DivX Playback • USB Video Playback **Audio:** 4 x 50W High Power Amp • CD-RV-RW/WMA/MP3/AAC Playback • 3 PreOuts (4 Volts) • 9-band Parametric EQ • Preset Equaliser (10 modes) • 6-Channel Digital Time Correction • Crossover • MediaXpander • Internet Sound Setting Service • 24-bit DAC **Navigation:** Built-in high-performance iGO PRIMO 2 Navigation System • 46 Western and Eastern European Countries covered • Built-in TMC Tuner providing Advanced TMC Functions • Voice Guidance in 29 Languages • Text to Speech (TTS) in 15 languages • High resolution maps with Anti-Aliasing and 3D landmark icons • 3D City maps • Enhanced POI database • GPS Antenna included • Optional trucking software available (see page 9 for more information) **Connectivity:** MirrorLink™ Technology • Made for iPhone and iPod • USB connection • Built-in Bluetooth® Module • Advanced Bluetooth® Functions • Direct camera port (with adjustable distance guides) • DVB-T Tuner Ready • Steering Wheel Remote Control Ready • Remote Control Ready • Vehicle Display Interface Ready • 2 x Rear A/V input, 1x output **General Features:** 2nd Generation One Look User Interface • Touch, Drag and Flick Control • My Favourites Customisation • Microphone Included • Menu Language Selection (18 languages) • USB Cable Included • 5 Background colours selectable

Common Features of the X800D-U and INE-W928R.



One Look Operation

The 50/50 split screen lets you view two sources at the same time, so you don't have to switch back and forth between two screens. Simple touch screen icons and customisable functions add to the convenience. My Favourites provides eight frequent actions on one screen for one-touch selection, and you can arrange the layout as you like by dragging icons. You can also select the background colour and match audio settings to your car model and listening preferences. Another great benefit is that two people can both save their own user profiles. When one of them enters the car, Bluetooth® automatically connects the phone and selects that profile, including favourites, phonebook, radio presets and camera view.

One Look Guidance

The high performance iGo Primo 2 navigation system is amazingly easy to use, thanks to its wide range of convenient and helpful functions. You get wide map coverage of 46 European countries, support for maps with 3D landmarks, highway mode, advanced address input and other sophisticated features. And of course, the 50/50 split screen function lets you view and control a navigation screen and another screen such as music with just one look.



One Look Safety

Alpine makes your driving experience safer with Advanced Bluetooth® capabilities for hands-free phone calls and rear view camera support to give you a better view to the rear as you are backing up.

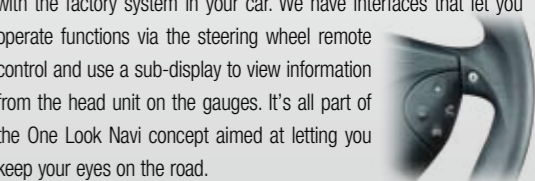


8" Display Proves that Bigger is Better!

The 8" display provides an eye-opening 43% larger screen size than 7" displays. DVD movies, iPod videos, everything is more fun to watch. You'll also have a better view of navigation map details, with even small street names standing out with greater clarity. This makes driving more relaxing, and safer too!

System Integration for Enhanced Driving Ease

Alpine makes it easy to integrate the X800D-U and the INE-W928R with the factory system in your car. We have interfaces that let you operate functions via the steering wheel remote control and use a sub-display to view information from the head unit on the gauges. It's all part of the One Look Navi concept aimed at letting you keep your eyes on the road.



Navigation Solutions

7-inch One Look Navi display: wide view for navigation, entertainment and safety.



INE-W987D ADVANCED NAVI STATION



7" FULL DISPLAY DETACHABLE

Video: 7" (17.8 cm) WGA detachable touch screen • iPod video playback (requires KCU-461V) • DVD±R/±RW/DivX Playback • USB Video Playback • Dual Zone Playback (independent A/V output for rear monitors) **Audio:** 4x 50W High Power Amp • CD-R/-RW/WMA/MP3/AAC Playback • Built-in DAB/DAB+/DMB Tuner • Tunelt Ready (with iPhone and Android) • BASS ENGINE SQ • 3 PreOuts (4 Volts) • 9-band Parametric EQ • Preset Equaliser (10 modes) • 6-Channel Digital Time Correction • Crossover settings • MediaXpander • 24-bit DAC **Navigation:** Built-in high-performance iGO PRIMO 2 Navigation System • 46 Western and Eastern European Countries covered • Built in TMC Tuner providing Advanced TMC Functions • Voice Guidance in 29 Languages • Text to Speech (TTS) in 15 languages • High resolution maps with Anti-Aliasing and 3D landmark icons • 3D City maps • Enhanced POI database • GPS Antenna included **Connectivity:** MirrorLink™ Technology • Digital Optical Output • Made for iPhone and iPod • USB connection • Input for parking sensor and air condition settings display interface (sold separately) • Built-in Bluetooth® Module • AVRCP Ver.1.4 compatible • Simple Secure Pairing (SSP) • Direct camera port (with adjustable distance guides) • DVB-T Tuner Ready • Steering Wheel Remote Control Ready • Remote Control Ready • Vehicle Display Interface Ready • 2x Rear AV input, 1x output **General Features:** 3rd Generation One Look User Interface • My Favourites Customisation • Microphone Included • Menu Language Selection (18 languages) • Anti-theft fully detachable Display • USB Cable Included • 5 Background colours selectable

DAB Tuner for Digital Sound Quality

Built-in DAB, DAB+ and DMB tuners deliver high digital sound clarity no matter where you're driving. If DAB is not available, the tuner switches to RDS. Includes Service Search function. Antenna sold separately.



Fully Detachable Faceplate

This anti-theft feature lets you easily remove the faceplate with a single touch, so you can take it with you when leaving the car. After removal, the unit will be in standby mode until it is replaced, rendering the unit useless to a thief.



INE-W977BT ADVANCED NAVI STATION



7" FULL DISPLAY DETACHABLE

Video: 7" (17.8 cm) WGA touch screen • iPod video playback (requires KCU-461V) • DVD±R/±RW/DivX Playback • USB Video Playback **Audio:** 4 x 50W High Power Amp • CD-R/-RW/WMA/MP3/AAC Playback • 3 PreOuts (4 Volts) • 9-band Parametric EQ • Preset Equaliser (10 modes) • 6-Channel Digital Time Correction • Crossover settings • MediaXpander • Internet Sound Setting Service • 24-bit DAC **Navigation:** Built-in high-performance iGO PRIMO 2 Navigation System • 46 Western and Eastern European Countries covered • Built in TMC Tuner providing Advanced TMC Functions • Voice Guidance in 29 Languages • Text to Speech (TTS) in 15 languages • High resolution maps with Anti-Aliasing and 3D landmark icons • 3D City maps • Enhanced POI database • GPS Antenna included **Connectivity:** MirrorLink™ Technology • Digital Optical Output • Made for iPhone and iPod • USB connection • Built-in Bluetooth® Module • Advanced Bluetooth® Functions • Direct camera port (with adjustable distance guides) • DVB-T Tuner Ready • Steering Wheel Remote Control Ready • Remote Control Ready • Vehicle Display Interface Ready • 2x Rear AV input, 1x output **General Features:** 2nd Generation One Look User Interface • Touch, Drag and Flick Control • My Favourites Customisation • Microphone Included • Menu Language Selection (18 languages) • Anti-theft fully detachable Display • USB Cable Included • 5 Background colours selectable

Navigation Solutions

6.1-inch One Look Navi with outstanding navigation performance and features.



INE-W920R ADVANCED NAVI STATION



6.1" FULL DISPLAY DETACHABLE

Video: 6.1" (15.5 cm) WGA touch screen • iPod video playback (requires KCU-461V) • DVD±R/±RW/DivX/CD-R/-RW Playback • USB Video Playback **Audio:** 4 x 50W High Power Amp • WMA/MP3/AAC Playback • 3 PreOuts (2 Volts) • 9-band Parametric EQ • Preset Equaliser (10 modes) • 6-Channel Digital Time Correction • Crossover settings • MediaXpander • Internet Sound Setting Service • 24-bit DAC **Navigation:** Built-in high-performance iGO PRIMO 2 Navigation System • 46 Western and Eastern European Countries covered • Built in TMC Tuner providing Advanced TMC Functions • Voice Guidance in 29 Languages • Text to Speech (TTS) in 15 languages • High resolution maps with Anti-Aliasing and 3D landmark icons • 3D City maps • Enhanced POI database • GPS Antenna included • Optional trucking software available (see page 9 for more information) **Connectivity:** MirrorLink™ Technology • Made for iPhone and iPod • USB connection • Built-in Bluetooth® Module • Advanced Bluetooth® Functions • RCA and Direct camera port (with adjustable distance guides) • DVB-T Tuner Ready • Steering Wheel Remote Control Ready • Remote Control Ready • Vehicle Display Interface Ready • 2x Rear AV input, 1x output **General Features:** 2nd Generation One Look User Interface • Touch, Drag and Flick Control • My Favourites Customisation • Microphone Included • Menu Language Selection (18 languages) • Detachable Faceplate • USB Cable Included • 5 Background colours selectable



INE-W925R ADVANCED NAVI STATION



6.1" FULL DISPLAY DETACHABLE

Features: Same features as INE-W920R but includes a built-in DAB/DAB+/DMB Tuner and 3 PreOuts (4 Volts)



INE-W970BT ADVANCED NAVI STATION



6.1" FULL DISPLAY DETACHABLE

Video: 6.1" (15.5 cm) WGA touch screen • iPod video playback (requires KCU-461V) • DVD±R/±RW/DivX/CD-R/-RW Playback • USB Video Playback **Audio:** 4 x 50W High Power Amp • WMA/MP3/AAC Playback • 3 PreOuts (2 Volts) • 9-band Parametric EQ • 10 EQ Presets Equaliser • 6-Channel Digital Time Correction • Crossover settings • MediaXpander • 24-bit DAC **Navigation:** Built-in high-performance iGO PRIMO 2 Navigation System • 45 Western and Eastern European Countries covered • Built in TMC Tuner providing Advanced TMC Functions • Voice Guidance in 29 Languages • Text to Speech (TTS) in 15 languages • High resolution maps with Anti-Aliasing and 3D landmark icons • 3D City maps • Enhanced POI database • GPS Antenna included **Connectivity:** Made for iPhone and iPod • USB connection • Built-in Bluetooth® Module • Advanced Bluetooth® Functions • AUX camera port (with adjustable distance guides) • DVB-T Tuner Ready • Steering Wheel Remote Control Ready • Remote Control Ready • Vehicle Display Interface Ready • 2x Rear AV input **General Features:** 2nd Generation One Look User Interface • Touch, Drag and Flick Control • Microphone Included • Menu Language Selection (24 languages) • Anti-theft security code • USB Cable Included • 5 Background colours selectable



Free map update within 30 days after first usage

Within 30 days after the installed unit's first GPS fix, you can go to www.naviextras.com to check if there is a map update available and download it free of charge. This ensures that you have the latest map data after purchase.

Perfect F.I.T. Installation Solutions

Installation solution for 8-inch One Look Navi XL.



Perfect F.I.T. Installation Solutions

Installation solution for 8-inch One Look Navi XL.



Perfect Installation in Your Volkswagen, Skoda or Seat Vehicle

Alpine makes it possible to upgrade to an 8-inch display with an installation that looks even better than the original factory appearance. Navigation and other displays are bigger and clearer, for a greatly enhanced driving experience.

It's Easy to Get All the Benefits of One Look Navi XL

Upgrading from 6.1 to 8 inches makes a huge difference in visibility and ease of use. You get an advanced navigation system with Alpine's One Look Navi XL 50/50 split screen, plus a wide range of features for outstanding operation, guidance and safety. Installation kits are available for various VW, Skoda and Seat models, which include everything you need for the install. To find out which kit is right for your car, see the list below. If your car has steering wheel remote control, the kit comes complete with an interface so you don't lose the remote control functions.



Volkswagen - Passat

KIT-8VW(D)

Installation Kit Compatibility

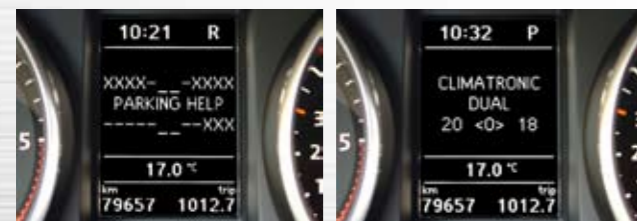
Brand	Make	Model	From Year	To Year	KIT-8VW(D)	KIT-8VWT(D)	KIT-8VWV	KIT-8VWTV	KIT-8VWD2	KIT-8VWTD2
Seat	Alhambra	7N	10/2010	-	-	Yes(1)(2)	-	Yes(1)(2)	-	Yes(1)(2)
Seat	Leon	1P/1PN	03/2009	10/2012	-	Yes	-	Yes(1)	-	Yes(1)
Seat	Toledo	KG	03/2013	-	-	Yes	-	Yes(1)	-	Yes(1)
Skoda	Fabia	5J	2007	-	-	Yes(1)(2)	-	Yes(1)(2)	-	Yes(1)(2)
Skoda	Octavia II	1Z	01/2009	2013	-	Yes(1)	-	Yes(1)	-	Yes(1)
Skoda	Rapid	NH	10/2012	-	-	Yes(1)	-	Yes(1)	-	-
Skoda	Roomster	5J	09/2006	-	-	Yes(1)(2)	-	Yes(1)(2)	-	Yes(1)(2)
Skoda	Superb II	3T	07/2008	-	-	Yes(1)	-	Yes(1)	-	Yes(1)
Skoda	Yeti	5L	08/2009	-	-	Yes(1)	-	Yes	-	Yes(1)
Volkswagen	Amarok	2H	03/2010	-	-	Yes	-	Yes	-	Yes
Volkswagen	Caddy 3	2K	10/2003	-	-	Yes	-	Yes(1)	-	Yes(1)
Volkswagen	CC	3CC	01/2012	-	Yes	-	Yes(1)	-	Yes	-
Volkswagen	EOS	1F	05/2006	-	-	Yes	-	Yes(1)	-	Yes
Volkswagen	Golf 5	1K	10/2003	10/2009	Yes(2)	-	-	-	-	-
Volkswagen	Golf 6	1K	11/2008	2013	Yes	-	Yes(1)	-	Yes(1)	-
Volkswagen	Golf Plus	1K	03/2005	12/2008	Yes	-	-	-	-	-
Volkswagen	Golf PlusFacelift	1K	01/2009	-	-	Yes(2)	-	Yes(1)(2)	-	Yes(1)(2)
Volkswagen	Beetle	5C1	11/2011	-	-	Yes	-	Yes	-	Yes

Brand	Make	Model	From Year	To Year	KIT-8VW(D)	KIT-8VWT(D)	KIT-8VWV	KIT-8VWTV	KIT-8VWD2	KIT-8VWTD2
Volkswagen	Jetta 5	1KM	08/2005	10/2010	Yes	-	-	-	-	-
Volkswagen	Jetta 6	16	01/2011	-	Yes	-	Yes(1)	-	Yes(1)	-
Volkswagen	Passat B6	Passat(B6)	03/2005	2010	Yes(2)	-	-	-	-	-
Volkswagen	Passat B7	3C	11/2010	-	Yes	-	Yes(1)	-	Yes(1)	-
Volkswagen	Passat CC	35	06/2008	2012	Yes(2)	-	Yes(1)(2)	-	Yes(1)(2)	-
Volkswagen	Polo 5	6R	03/2009	-	Yes	-	Yes(1)	-	Yes(1)	-
Volkswagen	Scirocco 3	13	08/2008	-	Yes	-	Yes(1)	-	Yes(1)	-
Volkswagen	Sharan 2	7N	09/2010	-	-	Yes	-	Yes(1)	-	Yes(1)
Volkswagen	T5 Facelift	7H	10/2009	-	-	Yes	-	Yes(1)	-	Yes(1)
Volkswagen	Tiguan	5N	04/2007	-	-	Yes	-	Yes(1)	-	Yes(1)
Volkswagen	Touran	1T/GP/GP2	02/2003	-	-	Yes	-	Yes(1)	-	Yes(1)

Kit Content
Installation parts, antenna adapter, Steeringwheel Remote Control Interface with CAN to analogue outputs

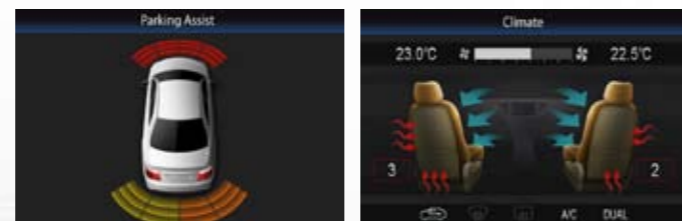
(1) Cars with white MFD (Multifunctional display)
(2) Slight modification to radio dock necessary

Volkswagen Integration Accessories



Parking Sensor Display

Climate Control Display



Parking Sensor Display

Climate Control Display

APF-D200VW Steering Wheel Remote Control Interface with Vehicle Display Output

A problem encountered in some models when removing the factory head unit is that the parking sensor and climate control displays disappear. By using the APF-D200VW, they both appear in the multi-function display in the instrument cluster. It works with all VWs that have white colour displays.

APF-V100VW CAN to Video converter for VW Platform

On some models, when the factory head unit is removed and replaced with the Alpine monitor, you lose the parking sensor and climate control displays on the screen. With this interface, you retain this visual information. It also includes a steering wheel remote control and vehicle display interface.

Achieve a Perfect Fit in Your Audi A3 or A4

Now you can upgrade to a One Look Navi XL with 8-inch monitor and be sure of getting an install that fits perfectly and looks great. In addition to much better visibility and greater operating ease when navigating, you'll have advanced capabilities for audio/video enjoyment, making phone calls and much more.

All Necessary Parts for Installation in One Kit

Alpine 8" installation kits for Audi A3 and A4 models provide all the parts needed to install and make the unit work properly in the vehicle. This includes all parts for mechanical fitting as well as a steering wheel remote control interface that also supplies CAN to analogue conversion for ACC, vehicle speed pulse and parking brake. An antenna adapter is also included.

Retain Steering Wheel and Vehicle Display Functions

The included steering wheel remote control interface allows you to retain all the functions of your steering wheel buttons, including volume, skip and even answering or rejecting incoming phone calls. The display in the centre of the instrument cluster will show information about the source that is playing, such as radio station names. If you want to keep the original sound system in the car, the interface allows this also.



Audi A4

KIT-8A4

Installation Kit Compatibility

Brand	Make	Model	From Year	To Year	Kit	Radio Connector	Vehicle Display
Audi	A3	8P/ 8PA	2003	2008	KIT-8A3(1)	ISO and Quadlock	-
Audi	A3	8P/ 8PA	2003	2008	KIT-8A3D(1)	Quadlock	Yes
Audi	A3	8P/ 8PA	2008	2013(2)	KIT-8A3F(1)	ISO and Quadlock	-
Audi	A3	8P/ 8PA	2008	2013(2)	KIT-8A3DF(1)	Quadlock	Yes
Audi	A4	B6/ B7	2000	2008	KIT-8A4(1)	ISO and Quadlock	-
Audi	A4	B6/ B7	2000	2008	KIT-8A4D(1)	Quadlock	Yes
Seat	Exeo	3R/ 3RN	2009	2013	KIT-8A4(1)	ISO and Quadlock	-
Seat	Exeo	3R/ 3RN	2009	2013	KIT-8A4D(1)	Quadlock	Yes

Kit Content
Note: if the Audi was equipped with a 1-DIN factory unit, it is possible to replace parts of the center console to fit the INE-W928R. The Aircondition Controller and the Radio Dock need to be replaced. ('D' indicates Vehicle Display Interface).

(1) Cars with a single DIN radio need an Audi double DIN installation kit.
(2) Cars with rectangular hazard light button.

Audi A3 and A4 Installation Kits



• KIT-8A3, KIT-8A4 and KIT-8A3F contain a Steering Wheel Remote Control Interface with 2 harnesses: Quadlock and ISO.
• KIT-8A3D, KIT-8A4D and KIT-8A3DF include a Quadlock harness.



Audi A3

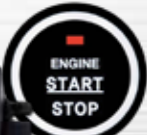
KIT-8A3

Integration Accessory



KPX-100B Idle Stop Power Booster

Some cars have an auto stop/start feature that turns the engine off and on at traffic lights, etc. This power booster keeps the voltage supply to the head unit stable, so it does not shut off when the engine stops.



ENGINE START STOP



Perfect F.I.T. Installation Solutions

Installation solution for 8-inch One Look Navi XL.



The Ideal 8-inch Monitor Upgrade for Your Mercedes

Give your Mercedes an impressive 8-inch high-resolution monitor and get top-of-the-line navigation and entertainment capabilities too. Naturally, you don't lose any of the original functions.

KIT-8MBF KIT-8MBI KIT-8MBM

For cars with Quadlock connector For cars with 8-pin ISO connector For cars with 20-pin mini ISO connector

All Necessary Parts for Installation in One Kit

Alpine 8" installation kits for Mercedes models provide all the parts needed to install and make the One Look Navi XL unit work properly in the vehicle. This includes all parts for mechanical fitting as well as a steering wheel remote control interface that also supplies CAN to analogue conversion for ACC, vehicle speed pulse and parking brake. An antenna adapter is also included.

Retain Steering Wheel and Vehicle Display Functions

The included steering wheel remote control interface allows you to retain all the functions of your steering wheel buttons, including volume, skip and even answering or rejecting incoming phone calls. The interface is available for three different connectors, depending on the original head unit.



Mercedes - Vito / Viano KIT-8MBF



Installation Kit Compatibility

Make	Model	Year	Kit	Connector	Kit Content
Mercedes	A Class (A169)	-> 04/2012	KIT-8MBF	Quadlock	Installation parts, antenna adapter, Steeringwheel Remote Control Interface with CAN to analogue outputs
Mercedes	A Class (A169)	-> 04/2012	KIT-8MBI	8 pin ISO	
Mercedes	A Class (A169)	-> 04/2012	KIT-8MBM	20 pin mini ISO	
Mercedes	B Class (T245)	-> 06/2011	KIT-8MBF	Quadlock	
Mercedes	B Class (T245)	-> 06/2011	KIT-8MBI	8 pin ISO	
Mercedes	B Class (T245)	-> 06/2011	KIT-8MBM	20 pin mini ISO	
Mercedes	Vito/ Viano (V/W 639)	2006 -> 2013	KIT-8MBF	Quadlock	
Mercedes	Vito/ Viano (V/W 639)	2006 -> 2013	KIT-8MBI	8 pin ISO	
Mercedes	Vito/ Viano (V/W 639)	2006 -> 2013	KIT-8MBM	20 pin mini ISO	

Mercedes Integration Accessory



APF-D200MB

Steering Wheel Remote Control Interface with Vehicle Display Output

When you remove the original radio unit, the multi-function display in the instrument cluster goes blank. This accessory allows you to keep the original display and features, including radio RDS information, caller name and music information like song names, album titles and track numbers, included in KIT-8MBM, -8MBI, -8MBF.

Other Vehicles Installation Kits

Make	Model	Year	Kit
Citroen	C4 Aircross	04/2012 ->	KIT-8ASX
KIA	Sportage 3	2010 ->	KIT-8KSB/G
Mazda	3	2009 ->	KTX-WXE-M38
Mitsubishi	ASX	06/2010 ->	KIT-8ASX
Nissan	Qashqai (+2)	12/2006 ->	KIT-80Q2
Peugeot	4008	04/2012 ->	KIT-8ASX
Porsche	Cayenne (SPA)	2002 -> 2010	KIT-8CYE NEW
Smart	For Two	2010 ->	KIT-8SMT NEW
Toyota	Camry	2012 ->	KTX-WXE-CA8
Toyota	Prius (4)	2009 -> 2012	KTX-PRS8-S
Toyota	RAV4	2012 ->	KIT-8RAV4



Perfect F.I.T. Installation Solutions

Installation solution for 8-inch One Look Navi XL.



Alpine has the perfect installation solution for owners of a Fiat Ducato based caravan. Your vacation will be much more enjoyable with a beautifully installed One Look Navi XL unit for navigation, movies, music, TV and radio.

The Perfect Companion for Your Fiat Ducato Camper

This installation kit makes it easy to upgrade your camper's interior with a large 8-inch monitor. You'll also benefit from enhanced navigation capabilities with a dedicated Truck and Camper Map that lets you calculate the best routes for a large vehicle. In addition, the most popular camping POIs are pre-installed.



All the Entertainment You Want

The One Look Navi XL units are perfect entertainers with all the convenience you could want. They can be operated via the touch screen or by an optional remote control. Connect a large monitor and watch DVDs in the lounge area as you control playback and volume from the comfort of your couch. The built-in 4 x 50 watt amp has all the power you need to enjoy action movies as well as soothing tunes from CDs or an iPod. There's no need to get up when you're in bed: the unit can be switched off and on by the remote control. Want digital TV or radio with it? Add the TUE-T150DV digital TV Tuner or the TUE-DAB1U DAB Tuner (for INE-W928R) to your system. And if your vehicle came with steering wheel buttons to control the radio, these functions can be retained with an optional interface.



Safety for You and Your Caravan

- Hands-free-calling with Alpine's advanced Bluetooth® functions allows you to hold and switch incoming calls and pair up to five phones
- Security code to prevent theft
- Ready for Rear View Cameras with distance guides and controls for Multi-View Cameras



KIT-8DUC

Installation Kit for FIAT Ducato

Installation Kit Compatibility

Brand	Model	Code	From Year	To Year	Note
FIAT	Ducato II	250	2006	->	From 2012 only for vehicles with open dash, not for vehicles with 2 DIN radio from factory.
Citroen	Jumper II	250	2006	->	From 2012 only for vehicles with open dash, not for vehicles with 2 DIN radio from factory.
Peugeot	Boxer II	250	2006	->	From 2012 only for vehicles with open dash, not for vehicles with 2 DIN radio from factory.

Note: To make room for the large 8 inch screen, it is necessary to cut away some plastic inside the radio dock. A cutting template is provided with the installation kit.



TRUCK-G500

Trucking Software for the INE-W92xR series and INE-W977BT

• Professional navigation solution for trucks (heavy goods vehicles), mobile homes and caravans. TRUCK-G500 works with the 2DIN Navigation Systems INE-W920R / INE-W925R / INE-W928R / INE-W977BT.

TRUCK-G500 takes into account the following restrictions and limitations when calculating the route and also gives warnings whilst driving without a calculated route in 39 countries*: general through traffic restrictions for trucks (i.e. environmental zones); thru traffic restrictions for all categories of dangerous goods (i.e. explosives, flammables); turn and U-turn restrictions for trucks; restrictions for trailers; length, width, height and weight limitations; height and width limitations of tunnels and bridge pass-throughs; maximum allowed weight of bridges.

* Andorra, Austria, Belgium, Bulgaria, Croatia, Czech Republic, Denmark, Estonia, Finland, France, Germany, Gibraltar, Greece, Hungary, Iceland, Ireland, Italy, Kosovo, Latvia, Liechtenstein, Lithuania, Luxembourg, Monaco, Netherlands, Norway, Poland, Portugal, Romania, Russia, San Marino, Serbia, Slovakia, Slovenia, Spain, Sweden, Switzerland, Turkey, Ukraine, United Kingdom



Don't Be Taken By Surprise

Use the Truck and Camper specific maps and you don't have to worry about driving on roads unfit for your vehicle. The TRUCK-G500 maps available from your Alpine dealer use vehicle height, width, length, weight and allowed speed as parameters for route calculation. You only have to set the parameters once to avoid problems every time you drive.



Mobile Media Stations

Audio and video from all your favourite sources. Non-stop entertainment!



Tunelt App Ready

IVE-W585BT

2-DIN MOBILE MEDIA STATION

6.1"



- Video:** 6.1" (15,5 cm) WVGA touch screen • DVD±R/±RW/DivX® Playback • iPod video playback (requires KCU-461V) • Visual EQ • USB Video Playback
- Audio:** 4 x 50W High Power Amp • CD-R/-RW/WMA/MP3/AAC Playback • Tunelt Ready (with iPhone and Android) • BASS ENGINE SQ • 3 PreOuts (4 Volts) • 9-band Parametric EQ • Preset Equaliser (10 modes) • 6-Channel Digital Time Correction • Crossover settings • MediaXpander • 24-bit DAC • Sound customization by car type
- Connectivity:** Made for iPhone and iPod • USB connection • Built-in Bluetooth® Module • AVRCP Ver. 1.4 compatible • Simple Secure Pairing (SSP) • Camera input (RCA) • 1 x A/V input, 1 x A/V output • DVB-T ready • Steering Wheel Remote Control Ready • Remote Control Ready
- General Features:** Menu Language Selection (24 languages) • Anti-theft Security Code • USB Cable Included • 8 Display colours selectable

The Mobile Media Stations not only play many different sources, they make them sound great! You get a wide variety of advanced tuning features, including the ability to use the versatile Tunelt app with Text-to-Speech.

High Quality Sound, Tuned for Your Car and Your Ear

The IVE-W585BT puts the power of advanced sound processing in your car with BASS ENGINE SQ to maximise bass sound and overall tone balance, plus lots of custom tuning functions like Digital Time Correction and 9-Band Parametric EQ. Best of all, you can control them easily from your smartphone with the Tunelt app. 24-Bit DAC and 4-volt PreOuts, too!



Keep in Touch with Your Facebook Friends

Now it's easy to keep up with Facebook messages while you're on the road. The Tunelt app not only gives you a notification list and wall link, it lets you "Like" messages and even reads them to you via Text-to-Speech!



Bluetooth® for Hands-free Calls and Music Enjoyment

Built-in Bluetooth® provides hands-free phone use with Simple Secure Pairing and 24-language support. You can stream music from your phone, and compatibility with AVRCP Ver. 1.4 makes searching your library easier than ever.



IVE-W530BT

2-DIN MOBILE MEDIA STATION

6.1"



- Video:** 6.1" (15,5 cm) WVGA touch screen • iPod video playback (requires KCU-461V) • DVD±R/±RW/DivX Playback
- Audio:** 4 x 50W High Power Amp • 3 PreOuts (2 Volts) • High Pass Filter • CD-R/-RW/WMA/MP3/AAC • USB Video Playback
- Navigation:** Touch control for NVE-M300P
- Connectivity:** Made for iPhone and iPod • USB connection • Built-in Parrot® Bluetooth® Module • Advanced Bluetooth® Functions (BT Plus) • Rearview Camera Input • Rear A/V input/output • DVB-T ready • Steering Wheel Remote Control Ready • Remote Control Ready
- General Features:** USB Cable Included • Dual Zone • Microphone Included • 4 Illumination Colours

NVE-M300P

Navigation: Add on navigation system for Alpine Mobile Media Stations, Digital Media Stations and on-dash displays • Touch Control Ready • 2D and real 3D map display with hundreds of 3D landmark icons • User Interface with consistent structure • Lane guidance display • Personal POI (Point Of Interest) import • Built-in TMC tuner with wide European coverage • 7-digit UK postcode input
For detailed information, visit: www.alpine-europe.com



Mobile Media Stations

Enjoy advanced networking features, including MirrorLink™ support (ICS models).



7"

MirrorLink™

ICS-X8

APP LINK STATION

- Video:** 7" (17,8 cm) WVGA touch screen • iPod video playback (requires KCU-461V) • VisualEQ • DVD±R/±RW/-VR/DivX®/CD-R/-RW Playback
- Audio:** 4 x 50W High Power Amp • CD/DVD Drive • WMA/MP3/AAC Playback • 3 PreOuts (4 Volts) • 9-band Parametric EQ • Preset Equaliser (10 modes) • 6-Channel Digital Time Correction • Digital Crossover • MediaXpander®
- Navigation:** Full MirrorLink™ control for compatible smartphones • Navigation touch control for NVE-M300P • GPS Antenna Connection (for KAE-100GPS external GPS antenna)
- Connectivity:** MirrorLink™ Technology • aha for iPhone compatible • Updateable for future MirrorLink™ enabled phones • 2x Rear USB connection for iPhone, iPod and MirrorLink™ compatible smartphones or USB sticks • Made for iPhone and iPod • Built-in Bluetooth® Module • Advanced Bluetooth® Functions • Direct camera port (with adjustable distance guides) • Steering Wheel Remote Control Ready • Remote Control Ready • Vehicle Display Interface Ready
- General Features:** Customizable Home Screen • Touch, Drag and Flick Control • iPod Cover Flow • Menu Language Selection (15 languages) • Micro USB Cable Included • 2x USB Cable Included



ICS-X7

APP LINK STATION

- Video:** 7" (17,8 cm) WVGA touch screen • iPod video playback (requires KCU-461V) • VisualEQ • DivX Playback
- Audio:** 4 x 50W High Power Amp • CD Mechanism-less Design • WMA/MP3/AAC Playback • 3 PreOuts (2 Volts) • 9-band Parametric EQ • Preset Equaliser (10 modes) • 6-Channel Digital Time Correction • Digital Crossover • MediaXpander
- Navigation:** Full MirrorLink™ control for compatible smartphones
- Connectivity:** MirrorLink™ Technology • aha for iPhone compatible • Updateable for future MirrorLink™ enabled phones • Rear USB connection for iPhone, iPod and MirrorLink™ compatible smartphones or USB sticks • Made for iPhone and iPod • Built-in Bluetooth® Module • Advanced Bluetooth® Functions • RCA camera port (with adjustable distance guides) • 1x A/V input • Steering Wheel Remote Control Ready • Remote Control Ready • Vehicle Display Interface Ready
- General Features:** Customizable Home Screen • Touch, Drag and Flick Control • iPod Cover Flow • Menu Language Selection (15 languages) • USB Cable Included • CD/DVD Mecha-less Design



IVA-D511R/RB

1-DIN MOBILE MEDIA STATION

- Video:** 7" (17,8 cm) WVGA Touch Screen display • DVD±R/±RW/DivX Playback • iPod video content playback (KCU-461V required) and album artwork display • Visual EQ
- Audio:** 4 x 50W High Power Amp • CD-R/-RW/MP3/AAC/WMA/DivX Playback • 6-Channel Digital Time Correction • 7-band Graphic EQ or 5-band Parametric EQ • HPF • Digital AM/FM Tuner • 24-Bit DAC • DVD-Audio 2ch down-mix
- Navigation:** Touch control for NVE-M300P
- Connectivity:** USB connection for iPod, iPhone or USB sticks • IMPRINT Ready • Parrot® Bluetooth® Ready with KCE-400BT or KCE-250BT • Full Speed AUX Input • AI-NET • 3 PreOuts • 2 PreIns for PXA-H100 • Remote Control Ready • 1 A/V input / 1 A/V output • RCA and Direct camera port • Steering Wheel Remote Control Ready • Digital Optical Output (requires KWE-610A)
- General Features:** Quick Search • 2.0m USB Cable Included • Dual Zone

IVA-D511R: ●●● IVA-D511RB: ●●●

All the advantages of a high quality Mobile Media Station in 1-DIN size with a 7" WVGA high resolution display. Advanced sound tuning features plus the ability to upgrade with navigation and Parrot® Bluetooth®.



Camera Systems

Presenting the latest camera technology

Camera Systems

A wide range of cameras for greater safety



This advanced camera not only gives you a clear view to the rear of the vehicle, it alerts you to moving objects.



Active View™ Rear Camera

HCE-C305R

ACTIVE VIEW™ CAMERA SYSTEM

- **Viewing Angle:** Rear = Horizontal 190°, vertical 150°
- **Viewing Modes:** 4 = Corner view, ground view, panorama view, rear view
- **General Features:** Ultra wide angle, multi-view camera with mounting kit • Active obstacle warning system that detects moving objects such as pedestrians and vehicles • Visual and acoustic driver warning • Adjustable multi-colour distance guides • Includes control switch, warning sound module and blackbox • Automatic imaging function: exposure and white balance adjustment • Mirror image (NTSC) • Standard RCA connectivity

Using ALERT (Alpine External Recognition Technology), the camera monitors a wide, deep zone in rear of the vehicle. When a moving person or car is detected, it highlights the object on the screen and also outputs a warning sound.



Standard reversing situation: coloured distance guides indicate the distance to any object behind your car. The guides can be adjusted to match your vehicle.



Multi-View allows you to see left and right behind your car when backing out of tight parking spots. A red warning box and sound indicate approaching vehicles and pedestrians to avoid an accident.



Red arrows and a warning sound indicate an approaching vehicle, bicycle or pedestrian and the direction.



A second later a pedestrian approaches from the right, as the camera system indicated. Due to the early warning an accident was prevented.

A wide view behind your vehicle makes reversing easier and safer!

Rear View Camera (Direct Connection)

HCE-C117D

REVERSING CAMERA

- **Viewing Angle:** Rear = Horizontal 127°, vertical 101°
- **Viewing Modes:** 1 = Rear view
- **Compatibility:** Works with products featuring Direct Camera Input
- **General Features:** Automatic imaging function: exposure and white balance adjustment • Mirror image (NTSC) • Camera dimensions: W 23,4mm x H 23,4mm x D 19,3mm • Non-blackbox design • Includes 11 meter cable



Rear View Camera

HCE-C115

REVERSING CAMERA

- **Viewing Angle:** Rear = Horizontal 127°, vertical 101°
- **Viewing Modes:** 1 = Rear view
- **General Features:** Automatic imaging function: exposure and white balance adjustment • Mirror image (NTSC) • Camera dimensions: W 23,4mm x H 23,4mm x D 19,3mm • Black-box dimensions: W 100mm x H 50mm x D 25mm • Standard RCA connectivity



A rear view camera is a great way to improve your parking skills and make reversing safer. The camera image automatically comes on when you shift into reverse, and distance guides that can be adjusted to match your car size help when parking. The cameras are very small, so they're easy to install and don't change the appearance of the car.

Wide View Rear Camera (Direct Connection)

HCE-C157D REVERSING CAMERA

- **Viewing Angle:** Rear = Horizontal 190°, vertical 150°
- **Viewing Modes:** 1 = Rear view
- **Compatibility:** Works with products featuring Direct Camera Input
- **General Features:** Ultra wide angle, camera with mounting kit • Automatic imaging function: Exposure and white balance adjustment • Mirror image (NTSC) • Includes direct camera connection



Conventional Rear Camera
View of approaching vehicle is distorted.



Alpine Wide View Rear Camera
Approaching vehicle is seen in proper perspective.

Alpine gives you wider, clearer views for greater safety and easier manoeuvrability.

Wide View Rear Camera

HCE-C155 REVERSING CAMERA

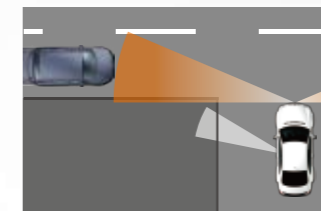
- **Viewing Angle:** Rear = Horizontal 190°, vertical 150°
- **Viewing Modes:** 1 = Rear view
- **Compatibility:** Works with products featuring conventional RCA input for NTSC Video
- **General Features:** Ultra wide angle, camera with mounting kit • Automatic imaging function: Exposure and white balance adjustment • Mirror image (NTSC) • Black-box dimensions: W 100mm x H 50mm x D 25mm • Standard RCA connectivity

Multi-View Front Camera

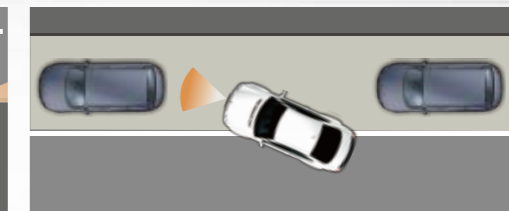
HCE-C212F

MULTI-VIEW FRONT CAMERA SYSTEM

- **Viewing Angle:** Front = Horizontal 186°, vertical 144°
- **Viewing Modes:** 3 = Corner view, ground view, panorama view
- **General Features:** Ultra wide angle camera with mounting kit • Includes control switch and black-box • Automatic imaging function: exposure and white balance adjustment • Camera dimensions: W 23,4mm x H 23,4mm x D 21,3mm • Black-box dimensions: W 100mm x H 50mm x D 25mm



Provides better visibility when coming out of 'blind' alleys or around obstructed corners.



Lets you see right in front of your car to help in parallel parking and other situations.

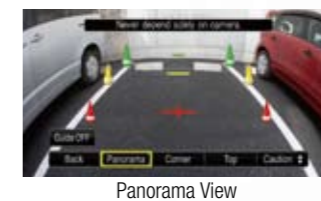
Wide viewing range provides better visibility when coming out of 'blind' alleys or around obstructed corners. Especially useful for reducing blind spots with SUVs and minivans.

Multi-View Rear Camera (Direct Connection)

HCE-C210RD

MULTI-VIEW REVERSING CAMERA

- **Viewing Angle:** Rear = Horizontal 186°, vertical 144°
- **Viewing Modes:** 4 = Corner view, ground view, panorama view, rear view
- **Compatibility:** Works with products featuring Direct Camera Input
- **General Features:** Automatic imaging function: exposure and white balance adjustment • Mirror image (NTSC) • Camera dimensions: W 23,4mm x H 23,4mm x D 21,3mm



Panorama View



Ground View



Rear View



Corner View

The HCE-C210RD can be directly connected to and controlled from the ICS-X8/X7, INE-W92XR, X800D-U, INE-W987D and INE-W977BT.

TOPVIEW® Camera System

HCE-C500 TOPVIEW® CAMERA SYSTEM FOR BMW-X5 (E70, 2006 ->)

- **Viewing Angle:** 360° view around the car
- **Viewing Modes:** 8 = Reverse and forward parking, including TOPVIEW mode that displays the car from a bird's eye view, allowing a 360° view around the car
- **Compatibility:** Installation Kit required (KIT-X5CCL or KIT-X5ICL) and cameras are programmed for use with BMW-X5(E70) and will not work with other vehicle
- **General Features:** Includes 4 cameras and black-box

Four cameras, on the front, rear and side mirrors, provide 360° coverage so you have no blind spots. A processor combines the four images to give you a bird's eye view around the vehicle; no more bumps or scratches, perfect parking every time. Only Alpine offers this type of system for the aftermarket. * Installation Kit required (KIT-X5CCL or KIT-X5ICL)





Rear Seat Entertainment

10.2" screen gives everyone a clear view



TMX-310U USB 10.2"

10.2" WVGA OVERHEAD MONITOR WITH HD USB MEDIA PLAYER

MP3 AAC WMA Game port

Video: 10.2" WVGA Screen LCD Colour Monitor (1.15 million pixels) • MPEG-1/2/4/ H264 (AVC) in HD and SD Compatible • Xvid Playback • Plays all commonly used video formats
Audio: MP3/AAC/WMA Playback • Built-in Analogue/Digital infrared Headphone Transmitter
Connectivity: 2 USB ports • SD card slot • 1 A/V Output and 2 A/V Inputs (incl. 1 Game port in Monitor Enclosure)
General Features: Cable Harness and Installation Kit • Built-in Dome Lights • Wireless Remote Control • Compatible with SHS-N106 / SHS-N206



SHS-D400 QUAD-SOURCE DIGITAL HEADPHONES

Digital, 4-channel wireless headphones for use with TMX-310U • CD-level sound quality • Folding design to be easily stored in a seat pocket • High comfort, adjustable headband



PKG-2100P

10.2" WVGA OVERHEAD MONITOR WITH DVD AND DivX PLAYER

MP3 DivX DVD WMA Game port

Video: 10.2" WVGA Screen LCD Colour Monitor (1.15 million pixels) • DVD-R/RW Compatible • DivX Playback
Audio: MP3 Playback
Connectivity: 1 A/V Output and 3 A/V Inputs (1 S-Video, 1 Game port in Monitor Enclosure)
General Features: Includes Single Source Wireless Headphone, Cable Harness and Installation Kit with Trim Ring

10.2"

This super-convenient on-dash monitor is a quick and easy solution for viewing maps, rear/front cameras and even movies.



TME-S370

6.5" WVGA ON-DASH TOUCH SCREEN MONITOR

CAMERA READY WMA

Video: 6.5" high-luminance WVGA touch screen • High picture quality
Audio: Built-in speaker for navigation voice guidance
Connectivity: Navigation, RCA and S-Video inputs • Dedicated camera input
General Features: Designed for on-dash applications • Ultra-slim design • Intuitive user interface • Ambient light sensor • 4 background and illumination colours selectable • Touch-sensitive hardkeys • Image flip (horizontal/vertical) • Extended voice guidance timing

6.5"

Rear Seat Entertainment

Everything for the perfect in-car AV system



Rear Seat Monitors



TME-M780

7" WIDE SCREEN MONITOR

Video: 7" VGA LCD Colour Monitor
Connectivity: 3 A/V Inputs (1 A/V Output Selectable)
General Features: Installation Kit Included • Built-in IR Transmitter for Alpine Headphones • TME-M780EM: Add-on Display without Black box for Dual Monitor Upgrade



TME-M680

5.8" WIDE SCREEN MONITOR

Video: 5.8" QVGA LCD Colour Monitor
Connectivity: 3 A/V Inputs (1 A/V Output Selectable)
General Features: Installation Kit Included • Built-in IR Transmitter for Alpine Headphones • TME-M680EM: Add-on Display without Black box for Dual Monitor Upgrade



TME-M780/-M680 Display with Black Box



TME-M780EM/-M680EM Additional Display

Easy Upgrade with a Second Monitor

The black box that comes with the monitor has an output for a second monitor. Extra monitors (TME-M780EM/-M680EM) are available at reduced cost, making this an attractive option for upgrading.

DVD Changer



DHA-S690 6 DISC DVD CHANGER

DVD VIDEO DivX Optical

Video: DVD±R/±RW/DivX Playback
Audio: CD/MP3/WMA/AAC Playback • 24-Bit DAC • Dolby® Digital and DTS compatible
Connectivity: Ai-NET and stand-alone operation • Optical output
General Features: DVD-Audio 2-channel down-mix • Remote control included • Touch Control Ready

Headphones



SHS-N206

DUAL SOURCE WIRELESS HEADPHONES
 Dual source fold-flat wireless headphones.

SHS-N106

SINGLE SOURCE WIRELESS HEADPHONES
 Single channel wireless headphones for use with PKG-2100P and TMX-310U

DVB Digital Tuner

Alpine's DVB Digital TV Tuner delivers exceptionally clear picture quality and improved reception of high-quality digital TV broadcasts – and include convenient Auto Scan as well as Alpine DVD changer and KCE-635UB controls.

Trademark of the DVB Digital Video Broadcasting Project (1991-1996)



TUE-T150DV

MOBILE DIGITAL TV RECEIVER (DVB-T)

General Features: Multi Language On Screen Display • Auto Search • EPG/Teletext • 2 Ch Antenna Diversity System • Remote Control Included • 1 A/V input / output • DVB ID Number 4314 • Remote Out cable



KAE-205DV

ACTIVE DVB-T SCREEN ANTENNA SET

• Full VHF and UHF Reception (40-800MHz) • Amplification +16dB • 5m cable with F-Type Plugs

KAE-210DV

ACTIVE DVB-T ANTENNA SET

• Full VHF and UHF Reception (174-230MHz, 470-863MHz) • Low Noise Amplifier • 5m cable with F-Type Plugs • LED Power Indicator • GSM Filter

Enjoy music and videos from USB sources.



KCE-635UB

ADVANCED USB VIDEO INTERFACE

USB

Video: MPEG-1/2/4, Windows® Media and AVI compatible • Picture Viewer
Audio: WAV, WMA, MP3 and AAC audio playback
Connectivity: Works with any monitor, Digital Media Station and Mobile Media Station with A/V input • Compatible with USB memory sticks and many portable HDDs
General Features: Intuitive user interface • Direct Touch Control Ready • Wireless remote control included



Here's a great way to upgrade any monitor or legacy Mobile Media Station (with Video AUX input). It lets you connect USB sticks and portable HDD units, and provides a cool-looking, easy-to-use interface. You can also watch movies in MPEG-1/2/4, Windows® Media, and AVI. What's more, it's got a built-in MP3 player with album art and a Picture Viewer. Enjoy Direct Touch Control with all current Alpine head units that feature touch screens.

TuneIt Head Units

Advanced sound tuning capabilities with Facebook link.

TuneIt Head Units

Tuning from your smartphone while you stay in touch with Facebook.



CDE-178BT

CD RECEIVER WITH BLUETOOTH®

Audio: 4 x 50W High Power Amp • CD-R/-RW/MP3/WMA/AAC Playback • 3 PreOuts (4 Volts) • BassEngine Pro • 6-Channel Digital Time Correction • 9-band Parametric EQ • MediaXpander • Digital Crossover • Subwoofer Level Control and Phase Selector • 24-bit DAC **Connectivity:** TuneIt app Ready with iPhone and Android • Built-in Bluetooth® module • BT Audio Streaming • vTuner for iPhone compatible • Made for iPhone and iPod • App Direct Mode • Rear USB port with 1000mA charging support • Rear AUX input (3.5mm mini jack) • Vehicle Display Interface Ready • Steering Wheel Remote Control Ready • Remote Control Ready **General Features:** High Resolution LCD Display • Non-shutdown design for vehicles with start-stop engine system • Quick Search • RDS Tuner with TA and EON Support • 4 Illumination Colours Selectable (blue/red/green/amber) • USB Cable Included • Microphone Included • Menu language selectable (German, Spanish, French, English, Dutch, Italian, Russian)

Fully customise your system sound with the TuneIt app, get more functions from App Direct, and enjoy the unmatched high resolution LCD display.



Tune Your Sound, Check Your Facebook

Download the TuneIt 2.0 app, then connect your iPhone or Android smartphone. Now you're ready to use the phone as a handy interface to fine-tune your system so it sounds just the way you want it to. You'll also see new Facebook messages on both the phone and head unit, and you can use TTS to hear them read out in German, English or French.

Technology and Features for Competition-Level Sound

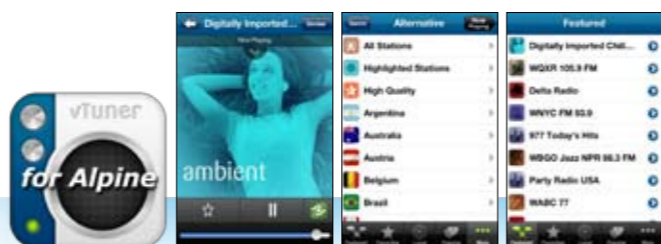
At the top of the Alpine head unit line, the CDE-178BT uses our best parts and technology, such as a 24-Bit DAC, to deliver the kind of sound purity that wins competitions. It also has BassEngine Pro customisation features like Digital Time Correction, 9-Band Parametric EQ, factory EQ presets, crossover, and three 4V PreOuts.

Built-in Bluetooth® Has Many Advantages

Bluetooth® comes built in, so you can enjoy hands-free phone operation and a wide range of convenient functions for superior in-car phone use. These include the ability to hold and switch incoming calls, phonebook functions like auto updating and easy ABC search, and easier control of music search and playback functions.

Hear the Music You Love, from Many Different Apps!

Alpine takes head unit/iPhone integration a step further with App Direct. Connect your iPhone via USB and App Direct will let you listen to sound from many apps through your system speakers. Select music or talk from Internet Radio, streaming services, whatever your favourite apps are. You get full control from the iPhone's touch screen and the iPhone stays fully operational.



Internet Radio Comes to Your Car

How would you like to have access to thousands of Internet Radio stations while you drive? With this head unit and an iPhone, it's easy. Go to the iTunes store, purchase the vTuner for Alpine iPhone app, connect your iPhone to the head unit, and start the app. Instant internet radio at your fingertips! You can search for stations various ways, including by country, city, local station and genre, with convenient control from either the head unit or the iPhone.

Large, Bright High Resolution Display

Alpine's high resolution display is big and clear for high visibility. You'll find that it's easier of use and makes driving safer. It occupies a large area of the front panel, giving you sharply clear text and graphics. All of the menu and music information is easier to see, and best of all it stays clear whether it's bright or dark in the car.



CDE-177BT

CD RECEIVER WITH BLUETOOTH®

Audio: 4 x 50W High Power Amp • CD-R/-RW/MP3/WMA/AAC Playback • 3 PreOuts • BassEngine Pro • 6-Channel Digital Time Correction • 9-band Parametric EQ • MediaXpander • Digital Crossover • Subwoofer Level Control and Phase Selector • 24-bit DAC **Connectivity:** TuneIt App Ready with iPhone and Android • Built-in Bluetooth® module • BT Audio Streaming • vTuner for iPhone compatible • Made for iPhone and iPod • App Direct Mode • Front USB port with 1000mA charging support • Front AUX input (3.5mm mini jack) • Steering Wheel Remote Control Ready • Remote Control Ready **General Features:** 2-line LCD Display • Non-shutdown design for vehicles with start-stop engine system • Quick Search • RDS Tuner with TA and EON Support • 4 Illumination Colours Selectable (blue/red/green/amber) • Microphone Included • Menu language selectable (German, Spanish, French, English, Dutch, Italian, Russian)

Alpine's latest apps help you get more music sources, tune the sound, link with Facebook and more.

Full Enjoyment of iPods and iPhones

The CDE-177BT provides a high speed connection to let you enjoy the functions of your iPod or iPhone. Along with superior sound quality and easy operation, you also get quick music search via song, artist, album, and other choices. Plus you can use App Direct to listen to audio from lots of different apps.

The Latest Performance and Convenience Features

This feature-packed head unit has Bluetooth® built in, so you get hands-free phone use. You can also enjoy the TuneIt app via Bluetooth® with Android-based phones or via USB with iPhones. And you'll achieve optimum audio performance with 6-Channel Digital Time Correction, 9-Band Parametric EQ, crossover and MediaXpander. Front USB and AUX ports, plus three PreOuts, make it easy to beef up your system.

High quality model with lots to like: TuneIt App Ready, vTuner App Ready, App Direct mode, high resolution display, BassEngine Pro



CDE-175R

CD RECEIVER / USB AND IPOD CONTROLLER

Audio: 4 x 50W High Power Amp • CD-R/-RW/MP3/WMA/AAC Playback • 3 PreOuts • BassEngine Pro • 6-Channel Digital Time Correction • 9-band Parametric EQ • MediaXpander • Digital Crossover • Subwoofer Level Control and Phase Selector • 24-bit DAC **Connectivity:** TuneIt App Ready with iPhone • vTuner for iPhone compatible • Made for iPhone and iPod • App Direct Mode • Rear USB port with 1000mA charging support • Rear AUX input (3.5mm mini jack) • Vehicle Display Interface Ready • Steering Wheel Remote Control Ready • Remote Control Ready **General Features:** High Resolution LCD Display • Non-shutdown design for vehicles with start-stop engine system • Quick Search • RDS Tuner with TA and EON Support • 4 Illumination Colours Selectable (blue/red/green/amber) • Menu language selectable (German, Spanish, French, English, Dutch, Italian, Russian) • USB cable included

Great Sound, Great Features, Great Value

This is a great model for iPhone users, since it's ready for the TuneIt app and the vTuner for Alpine iPhone app. It's also got App Direct mode. BassEngine Pro means top quality sound and the high resolution display means best visibility. It's Steering Wheel Remote Control Ready and Vehicle Display Interface Ready, for a perfect install in almost any vehicle.

Choose Your Favourite Colour

Quad Illumination is a popular Alpine feature that lets you choose four colour schemes: red, green, blue or amber. When you select one, all of the buttons change colour. Match the colour of your dashboard illumination to give your cabin interior a nice unified look.

TuneIt Head Units

Fine-tune system sound from your smartphone. Cool and convenient!



CDE-185BT

CD RECEIVER WITH ADVANCED BLUETOOTH®

Audio: 4 x 50W High-Quality Built-In Amplifier for Excellent Sound Quality • CD-RV-RW/MP3/WMA/AAC Playback • 3 PreOuts • BASS ENGINE SQ (6-level adjustment) • Preset EQ (10 modes) • 9-band Parametric EQ • MediaXpander • High-pass/Low-pass Filter • 24-bit DAC **Connectivity:** TuneIt App Ready with iPhone and Android • Built-in Bluetooth® module with AVRCP 1.4 support • BT Audio Streaming • Front USB port with 1000mA charging support • Made for iPhone and iPod • App Direct Mode • Voice Control activation key (requires compatible mobile phone) • Front AUX input (3.5mm mini jack) • Steering Wheel Remote Control Ready • Remote Control Ready **General Features:** Multicolour Illumination with over 150,000 colour variations (for display and button illumination) • 2-line LCD Display • Spectrum Analyser • Non-shutdown design for vehicles with start-stop engine system • Quick Search • RDS Tuner with TA and EON Support • Detachable faceplate with carry case • Menu language selectable (German, Spanish, French, English, Dutch, Italian, Russian)



Premium sound quality from high-performance technology and tuning, with lots of added value.

Your Assurance of Premium Sound Quality

The CDE-185BT has multiple ways of assuring you get the very best sound quality. It lets you use the Alpine TuneIt app that turns your smartphone into an interface for custom sound tuning. BASS ENGINE SQ automatically makes the best bass settings while maintaining total sound balance. Other top quality features include a 24-bit DAC, MediaXpander to enhance compressed audio and 3 PreOuts.



Variable Illumination Gives You a World of Colour

With Variable Illumination, you're no longer limited to a choice of just a few colours. You can actually browse through a range of more than 150,000 colours to select exactly the tone to match or complement your dashboard illumination. Many preset colours are also available.



You not only get your Facebook messages, the Head Unit even reads them to you!



Facebook in your car!
Listen to your Facebook messages, picture comments and time-line posts while you drive in a safe and convenient way. You can LIKE messages too with a simple push of a button.

CDE-183BT

CD RECEIVER WITH ADVANCED BLUETOOTH®

Audio: 4 x 50W High-Quality Built-In Amplifier for Excellent Sound Quality • CD-RV-RW/MP3/WMA/AAC Playback • 3 PreOuts • BASS ENGINE SQ (6-level adjustment) • Preset EQ (10 modes) • 9-band Parametric EQ • MediaXpander • High-pass/Low-pass Filter • 24-bit DAC **Connectivity:** TuneIt App Ready with iPhone and Android • Built-in Bluetooth® module with AVRCP 1.4 support • BT Audio Streaming • Front USB port with 1000mA charging support • Made for iPhone and iPod • App Direct Mode • Voice Control activation key (requires compatible mobile phone) • Front AUX input (3.5mm mini jack) • Steering Wheel Remote Control Ready • Remote Control Ready **General Features:** White LCD Display • Non-shutdown design for vehicles with start-stop engine system • Quick Search • RDS Tuner with TA and EON Support • Detachable faceplate with carry case • 2 Illumination Colours Selectable (red/green) • Menu language selectable (German, Spanish, French, English, Dutch, Italian, Russian)



Sound tuning right from your phone

The TuneIt app allows you to tune the sound of your CDE-183BT and adjust for example the parametric EQ and crossover settings. You can even download car specific settings for your vehicle from the cloud.



Bluetooth® Is Even More Convenient

Alpine's latest Bluetooth® module is built in, for easier hands-free phone use and audio streaming, with song info display and song search by tag info. iPhone pairing is super-simple!



CD Head Units

Get the best sound from your CDs and a lot more.



CDA-137BTi

CD RECEIVER WITH ADVANCED BLUETOOTH®

Audio: 4 x 50W High Power Amp • BT Audio Streaming • CD-RV-RW/MP3/AAC/WMA Playback • BassEngine Pro • 6-Channel Digital Time Correction • 7-band Graphic EQ or 5-band Parametric EQ • High Pass Filter • Digital AM/FM Tuner • Auto Volume • 24-Bit DAC • 3 PreOuts (4 Volts) **Connectivity:** Build-in Parrot® Bluetooth® module • Advanced Bluetooth® Functions (BT Plus) • Rear USB port with 1000mA charging support • Made for iPhone and iPod • IMPRINT Ready with PXA-H800/H100 • 2 PreIns for PXA-H100 • Steering Wheel Remote Control Ready • Vehicle Display Interface Ready • AUX Input (requires KCA-121B) **General Features:** BioLite Display • Quick Search • Ai-NET • 4 Illumination Colours Selectable (blue/green/red/amber) • Remote Control Included • 2.0m USB cable and 30-pin iPod / USB adapter Included



Incredible audio performance with many sound customisation features and built-in Bluetooth®.

Best Sound Just the Way You Want It

Whether you're listening to a CD, music from an iPod or smartphone, or the digital AM/FM tuner, the basic sound quality is incredibly good. But Alpine gives you the tools to take it to an even higher level: Digital Time Correction, 7-Band Graphic EQ or 5-Band Parametric EQ and a high pass filter. Plus MediaXpander for improving compressed sound and Auto Volume that adjusts for road noise.



Bluetooth® for Hands-Free Calls and More

Built-in Bluetooth® makes phone use easier and more versatile. In addition to hands-free operation, it gives you extra phone functions like five presets for echo reduction, and improved phonebook functionality like auto updating. Plus text message alert and advanced media control.



Bluetooth® Common Bluetooth® Features

Built-in BT Plus: Easier and More Functional

BT Plus is even more user-friendly, with new and improved functions for superior in-car phone use.



New Telephone Functions

BT Plus lets you hold and switch up to 2 incoming calls. Five presets for echo reduction improve voice quality. Various icons such as battery and mobile reception keep you informed.



Improved Phonebook Functionality

Convenient new functions include auto phonebook updating and easy ABC phonebook search. You can also rapidly scroll through the contacts in your phonebook or search them by name.



Advanced Media Control

You can enjoy music stored on your Bluetooth®-enabled phone, with display of song, artist and tag information. The fast, stable Bluetooth® link ensures that the sound quality is always first-rate.

Bluetooth® Audio Streaming

In addition to hands-free phone use, Bluetooth® lets you enjoy wireless audio streaming.



This convenient function connects your phone wirelessly, so you can hear all the music stored on it, plus stream and control audio from internet radio stations and personalized web radio such as Spotify, TuneIn, AUPEO, Last FM and Audible. And with Alpine's fast and reliable Bluetooth® connection, the sound quality is always excellent.



KTP-445A HEAD UNIT POWER PACK

4 X 100W MAX

Audio: 4 x 100W MAX **General Features:** Works with most 2005 - present Alpine head units • Plug & Play installation (no additional wiring required) • Compact size (fits easily inside dashboard of most vehicles) • Can also be used in PXA-H100 systems



PXA-H100 IMPRINT SOUND PROCESSOR

Audio: Audyssey MultEQ Sound Optimisation • 24-Bit DAC • MediaXpander • BassEngine Pro features for self tuning • 3 PreOuts (4 Volts) • 7-band Graphic EQ • 5-band Parametric EQ • 3-way/ 2-way Crossover • 6-channel Digital Time Correction • Subwoofer Phase Selector **Connectivity:** Works with all IMPRINT Ready Head Units • Ai-NET • IMPRINT Sound Calibration requires KTX-H100
Ask your dealer for more information



CD Head Units

Match your dashboard size and colour, and get ready for great sound from all your music media.

CDE-W235BT

2-DIN CD RECEIVER WITH ADVANCED BLUETOOTH®



USB *bass engine* **QUICK SEARCH** **Front** **2 PREOUTS**

■ **Audio:** 4 x 50W High Power Amp • BT Audio Streaming • CD- R/-RW/WMA/AAC/MP3 Playback • 1 PreOut with Subwoofer Level Control • 3-band Parametric EQ • Factory EQ with 10 presets • High-pass / Low-pass Filter ■ **Connectivity:** Built-in Bluetooth® module • Advanced Bluetooth® Functions (BT Plus) • Made for iPod and iPhone • Front USB Port • USB connection for iPhone and iPod or USB sticks • Front AUX Input (3.5mm mini jack) • Remote Control Ready • Steering Wheel Remote Control Ready

■ **General Features:** 2-line LCD-Display • Quick Search



CDE-W233R

2-DIN CD RECEIVER WITH USB AND iPod CONTROLLER

MP3 *bass engine* **QUICK SEARCH** **Front** **2 PREOUTS**

■ **Audio:** 4 x 50W High Power Amp • CD-R/-RW/MP3 Playback • 1 PreOut with Subwoofer Level Control • 3-band Parametric EQ • Factory EQ with 10 presets • High-pass / Low-pass Filter

■ **Connectivity:** Made for iPod and iPhone • Front USB Port • USB connection for iPhone and iPod or USB sticks • Front AUX Input (3.5mm mini jack) • Remote Control Ready • Steering Wheel Remote Control Ready

■ **General Features:** 2-line LCD-Display • Quick Search

New 1-DIN head units with BASS ENGINE SQ, easy iPod control, high-visibility display and much, much more.



CDE-182R

CD RECEIVER / USB AND iPod CONTROLLER

QUICK SEARCH **Front** **2 PREOUTS** **USB MP3 AAC**

■ **Audio:** 4 x 50W High-Quality Built-In Amplifier for Excellent Sound Quality • CD-R/-RW/MP3/WMA/AAC Playback • 3 PreOuts • BASS ENGINE SQ (6-level adjustment) • Preset EQ (10 modes) • 3-band Parametric EQ • Low-pass Filter • Loudness ■ **Connectivity:** Front USB port with 1000mA charging support • Made for iPhone and iPod • App Direct Mode • Front AUX input (3.5mm mini jack) • Steering Wheel Remote Control Ready • Remote Control Ready

■ **General Features:** White LCD Display • Quick Search • RDS Tuner with TA and EON Support • Detachable faceplate with carry case • Blue/White Illumination colour • Menu language selectable (German, Spanish, French, English, Dutch, Italian, Russian)

High Sound Quality
Featuring a high quality built-in amplifier for excellent sound quality and dynamic response.

CD Head Units

High sound quality and versatile functions for any budget.

CDE-181R

CD RECEIVER / USB AND iPod CONTROLLER



■ **Audio:** 4 x 50W High Power Amp • CD-R/-RW/MP3/WMA/AAC Playback • 2 PreOuts • BASS ENGINE SQ (6-level adjustment) • Preset EQ (10 modes) • 3-band Parametric EQ • Low-pass Filter

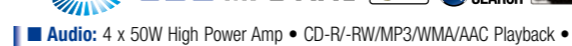
■ **Connectivity:** Front USB port with 1000mA charging support • Made for iPhone and iPod • App Direct Mode • Front AUX input (3.5mm mini jack) • Steering Wheel Remote Control Ready • Remote Control Ready

■ **General Features:** White LCD Display • Quick Search • RDS Tuner with TA and EON Support • Detachable faceplate with carry case • Green Illumination Colour • Menu language selectable (German, Spanish, French, English, Dutch, Italian, Russian)



CDE-180RR

CD RECEIVER / USB CONTROLLER



■ **Audio:** 4 x 50W High Power Amp • CD-R/-RW/MP3/WMA/AAC Playback • 2 PreOuts • BASS ENGINE SQ (6-level adjustment) • Preset EQ (10 modes) • 3-band Parametric EQ • Low-pass Filter

■ **Connectivity:** Front USB port with 1000mA charging support • Front AUX input (3.5mm mini jack) • Steering Wheel Remote Control Ready • Remote Control Ready

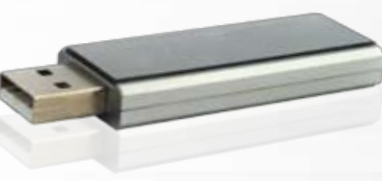
■ **General Features:** White LCD Display • Quick Search • RDS Tuner with TA and EON Support • Detachable faceplate with carry case • Red Illumination Colour • Menu language selectable (German, Spanish, French, English, Dutch, Italian, Russian)



CDE-181RR
Same features as CDE-181R but with Red Illumination



CDE-181RM
Same features as CDE-181R but with Amber Illumination



CDE-180R
Same features as CDE-180RR but with Green Illumination



CDE-180RM
Same features as CDE-180RR but with Amber Illumination

Common Key Features of CDE-182R / CDE-181 Series / CDE-180 Series



iPhone Quick Charge & HDD Power Supply
A special quick charge function recharges your iPhone faster than ever. And because these head units support a 1 Ampere power supply, you can connect and power portable hard disks for an even bigger music selection.



BASS ENGINE SQ for Best Bass Sound Quality
The BASS button next to the central control knob takes you directly to Alpine's advanced bass level adjustment function. As you choose one of the six levels, it automatically adjusts frequency cutoff, Q factor and subwoofer level for optimum sound quality.

Head Units Without CD Drive

Great for enjoying portable digital media. And very affordable!

DAB Solutions

Ideal solutions for enjoying portable digital media.



Tunes App Ready

iDE-178BT

DIGITAL MEDIA RECEIVER WITH BLUETOOTH®

Audio: 4 x 50W High Power Amp • MP3/WMA/AAC Playback • 3 PreOuts (4 Volts) • BassEngine Pro • 6-Channel Digital Time Correction • 9-band Parametric EQ • MediaXpander • Digital Crossover • Subwoofer Level Control and Phase Selector • 24-bit DAC **Connectivity:** Tunes App Ready with iPhone and Android • Built-in Bluetooth® module • BT Audio Streaming • iPhone vTuner compatible • Made for iPhone and iPod • App Direct Mode • Rear USB port with 1000mA charging support • Rear AUX input (3.5mm mini jack) • Vehicle Display Interface Ready • Steering Wheel Remote Control Ready • Remote Control Ready **General Features:** High Resolution LCD Display • Non-shutdown design for vehicles with start-stop engine system • Quick Search • RDS Tuner with TA and EON Support • 4 Illumination Colours Selectable (blue/red/green/amber) • USB Cable Included • Microphone Included • CD Mechanism-less design • Menu language selectable (German, Spanish, French, English, Dutch, Italian, Russian)

Drive Connected

With Alpine's App Direct function, you can now listen to music from any iPhone app through your car speakers. Enjoy stored music, Internet Radio and more. Conveniently select apps, songs, etc. right from the phone's touch screen.



Sound Tuning via Smartphone

The Tunes app for iPhone and Android gives you a full set of sound tuning operations, even Time Correction, that you can perform right from your phone. You can upload your settings to share with others and also see and get other settings.



CDE-136BT CD / DAB RECEIVER WITH ADVANCED BLUETOOTH®

Audio: 4 x 50W High Power Amp • BT Audio Streaming • CD-R/RW/AAC/WMA/MP3 Playback • 3-band Parametric EQ • Factory EQ with 10 presets • High-pass / Low-pass Filter • 3 PreOuts **Connectivity:** Built-in DAB/DAB+/DMB Tuners • Built-in Parrot® Bluetooth® module • Advanced Bluetooth® Functions (BT Plus) • High Speed USB Connection for iPod or USB sticks • Made for iPhone and iPod • Direct iPod Control • Front AUX input (3.5mm mini jack) • Steering Wheel Remote Control Ready • Remote Control Ready **General Features:** White LCD Display • Quick Search • 4 Illumination Colours Selectable (blue/red/green/amber) • USB cable included

Built-in DAB, DAB+ and DMB Tuners

The CDE-136BT uses the newest tuning technology to ensure that you always get maximum music enjoyment, no matter where you are driving. It lets you enjoy radio with excellent digital sound quality via its built-in DAB, DAB+ and DMB tuners. If DAB is not available, it will automatically switch between RDS and DAB, for continuous perfect reception. It provides Service Search and has a DAB antenna power supply. An optional Alpine antenna is available (KAE-220DA).



Built-in Bluetooth® Convenience

The built-in Bluetooth® module lets you use a Bluetooth®-enabled phone without a connecting cable. You also get extra phone functions like five presets for echo reduction, and improved functionality like auto updating. Plus text message alert and advanced media control.



UTE-72BT

DIGITAL MEDIA RECEIVER WITH BLUETOOTH®

Audio: 4 x 50W High Power Amp • MP3/WMA/AAC Playback • 2 PreOuts • 3-band Parametric EQ • MediaXpander • High-pass / Low-pass Filter **Connectivity:** Built-in Bluetooth® module • BT Audio Streaming • Made for iPhone and iPod • App Direct Mode • Front USB port with 1000mA charging support • Front AUX input (3.5mm mini jack) • Steering Wheel Remote Control Ready • Remote Control Ready **General Features:** White LCD Display • Quick Search • RDS Tuner with TA and EON Support • Red Illumination Colour • CD Mechanism-less design • Menu language selectable (German, Spanish, French, English, Dutch, Italian, Russian)



UTE-81R

DIGITAL MEDIA RECEIVER / USB CONTROLLER

Audio: 4 x 50W High Power Amp • MP3/WMA/AAC Playback • BASS ENGINE SQ (6-level adjustment) • Preset EQ (10 modes) • 3-band Parametric EQ **Connectivity:** Front USB port with 1000mA charging support • Front AUX input (3.5mm mini jack) **General Features:** White LCD Display • Quick Search • RDS Tuner with TA and EON Support • Detachable faceplate • Green Illumination Colour • Menu language selectable (German, Spanish, French, English, Dutch, Italian, Russian)



TUE-DAB1U

MOBILE DAB/DAB+ RECEIVER

• Mobile DAB/DAB+ receiver with direct touch control • 6 user interface languages selectable (English, German, French, Italian, Danish, Norwegian) • Automatic channel search • Alphabetic channel sorting • Slide Show display (if supported by station) • 24V compatible • Full Touch Control with ICS-X7, ICS-X8, X800D-U, INE-W987D, IVE-W585BT, INA-W910R, INE-W920R, INE-W925R, INE-W928R, INE-W970BT, INE-W977BT, IVA-D511R/RB, IVA-D800R, IVE-W530BT, IVE-W535BT • DAB antenna sold separately

A great way to add DAB tuning capabilities to your system, with support for iPod/iPhone/iPad and USB players.



EZi-DAB

ADD-ON DAB RECEIVER

Connectivity: USB Connection for memory devices • Audio line in / out • Made for iPod and iPhone • FM Modulator **General Features:** Dual DAB/DAB+/DMB Tuners • Commander with rotary encoder • Dimmer Function • White OLED Display • Includes Commander Unit, Controller Interface Box, cable sets and mounting cradle • Requires optional DAB Antenna • Illumination Colours selectable by multicolour LEDs

DAB Reception Plus Other Great Features

- **Five Colour Illumination:** Choose the colour that matches your dashboard lighting. Red, blue, green, amber or white.
- **BioLite Display:** A super-clear display that's easy to see under all kinds of lighting conditions.
- **DAB Auto Switching:** Changes frequency if the same station is detected with better reception on another frequency. This ensures continuous listening pleasure with no need for retuning.
- **Pause and Rewind Live Radio:** Now you can pause and "rewind" when you're listening to radio, thanks to a built-in buffer memory. You won't miss a thing!

If your head unit does not offer DAB reception, you can upgrade radio sound quality with this easily installable DAB/DAB+/DMB system. It uses two DAB tuners, so you get best station reception and selection because it constantly searches for available channels. It can easily be controlled with the compact Commander Unit, which is simple to connect via the AUX-in or its built-in FM transmitter. The package includes a Controller Interface, a Commander unit, a mounting cradle and cable sets, and supports USB and iPhone/iPod audio playback.



Sound Solutions

Incredible Range of Sound Processing Capabilities



RUX-C800



PXA-H800 SYSTEM INTEGRATION AUDIO PROCESSOR



- Audio:** 31-band Graphic EQ per channel (front L/R, rear L/R, centre, subwoofer: 10-band), Gain -12dB to +12dB
- Parametric EQ (front L/R, rear L/R, centre: 10-band, subwoofer: 5-band), Q 0.5/1/1.5/2/2.5/3/4/5, Gain -12dB to +12dB
- 8 channel auto/manual digital time correction (0 to 20ms, 0.05ms steps) • MediaXpander Plus • X-Over: Digital HPF/LPF (Slope 0/-6/-12/-18/-24/-30/-36, Gain -24dB to 0dB) • RoadEQ • ImprintEQ • Dolby Digital • Dolby PRO LOGIC II • DTS®
- 32-Bit Floating-point SHARC DSP • 4 x Wolfson 24-Bit D/A Converters • Euphony™ Sound Enhancement
- Connectivity:** Basic functions Touch Control Ready with IVA-D511R/RB, IVA-D800R, IVA-W910R • 6 Channel RCA Input • 2 x AI-NET Inputs • 2 x Optical Input • 6 Channel Speaker Level Input • 8 Channel configurable RCA output (4 Volts) • Gold-plated RCA Connectors • USB Port for computer setup via included Sound Manager software (requires Windows® XP/Vista®/7) • **General Features:** RUX-C800 required for full operation • Included Microphone and USB Cable • Includes 5.5m AI-NET cable

Take your system up to levels of sound quality that you didn't think were possible, and get more ways to upgrade.

Audiophile-grade Components

A few years ago, Alpine released the AlpineF#1Status series of ultra-high performance audio components. Many of the lessons learned from developing those models, about high-grade parts and how to apply them, are now being put to good use in products like the PXA-H800. One example is the use of four Wolfson 24-Bit D/A converters, which are generally found only in professional recording systems and help to ensure superb detail and soundscape. Another is the use of two 32-Bit floating-point SHARC DSPs, which precisely reproduce the sound source with no degradation. Other top quality parts are a 6-layer PWB and a 24-Bit A/D converter for high quality RCA input and 114dB dynamic range at the device level.



Advanced Sound Tuning Functions

8-channel Digital Time Correction (automatic or manual) provides optimum sound staging by ensuring that the sounds from all speakers reach your ears at the same time. Digital high and low pass filters let you set crossovers exactly where you want them. RoadEQ cancels annoying road and wind noise, and MediaXpander+ restores the full sound quality missing from compressed audio sources while also improving the bass from factory-installed speakers.



Fine Tuning via PC

Connect your PC to the PXA-H800 with a USB cable and you can get a cool-looking, easy to use GUI that lets you make detailed audio settings. You can also store numerous settings on the computer, for later selection or even for various different vehicles.



Bi-Phantom Centre Speaker and Six Speaker-Level Inputs

The Bi-Phantom function creates centre speaker sound even if you don't have a centre speaker, for full 5.1-channel sound. And with six speaker-level inputs, you can connect six audio channels from components that don't have preamp outputs.



For the best user experience and full command of PXA-H800 functions, and a display with detailed information.



RUX-C800

- CONTROLLER FOR PXA-H800
- General Features:** Includes installation kit • BioLite display • Dual illumination (blue/red)



Sound Solutions

All-digital amplifiers with best-in-class power density performance.



Inside these compact, stackable amps, advanced technology delivers extreme power and supremely efficient performance. Complete lineup from mono to 5-channel versatility.

Highest Power, Highest Efficiency, Highest Quality: That's PDX!

All the PDX amps use Alpine's Switch-Mode Digital Amplification technology, so you can drive them at high power for as long as you want. They're incredibly efficient at all power levels. A Thermal Protection circuit ensures that heat won't shut them down by scaling back the power slightly. They also outperform other Class-D amps by achieving low distortion and high frequency response. The slim chassis and unique design lets you stack them vertically, saving considerable space.



	PDX-M12	PDX-M6	PDX-F6	PDX-F4	PDX-V9
Output Channels	Mono	Mono	4 Channels	4 Channels	5 Channels
Max Power Output	2500W	1200W	1200W	900W	1600W
RMS Power Output [@14.4V 1%THD]	1 x 1200W (2/4Ω)	1 x 600W (2/4Ω)	4 x 150W (2/4Ω) 2 x 300W (4Ω)	4 x 100W (2/4Ω) 2 x 200W (4Ω)	4 x 100W + 1 x 500W (2/4Ω) 2 x 200W + 1 x 500W (4Ω)
Amplification Circuit	Class-D	Class-D	Class-D	Class-D	Class-D

Common Features: Selectable Variable Filters HP & LP • Mono amps provide Variable LP, Selectable Subsonic Filters and compatibility with Remote Control Bass Knob (RUX-KNOB) • Stacking Capability • Thermal and Low Voltage Protection • Ultra Wide Frequency Response Range • Quick Connectors for Speakers and Power Supply • Mono 1 Ω Drive • RMS Output @ 2-4 Ω



The three Class-D fully digital PDR models give you exactly what you want in a power amplifier: powerful bass, big dynamic sound, non-shutdown performance, and easy installation.

Awesome Power Density, Digital Sound Quality

Each PDR amp is unmatched in its class for **switch-mode DIGITAL** power density performance (watts per cubic cm) and damping factor. You get tremendous power at all levels, with hard-hitting bass. S/N ratios and frequency response are also outstanding.

Designed for Convenient Installation

All the terminals are located on one side of the amp, allowing easy installation anywhere in the boot or under a seat. The control panel is on the top for easy access, and the logo can be removed and turned so it always faces in the right direction.



	PDR-M65	PDR-F50	PDR-V75
Output Channels	Mono	4 Channels	5 Channels
Power [@14.4V 1%THD]	1 x 450W	4 x 85W	4 x 75W + 1 x 250W
	1 x 650W	4 x 125W	4 x 100W + 1 x 350W
	—	2 x 250W	2 x 200W
Max Power Output	1300W	1000W	1300W
Filter	Variable LPF	Variable, OFF/LP/HP Selectable	CH1-4: Variable Off/HPF selectable CH5: Variable LPF
Function			
LP	50Hz - 400Hz -24dB/oct	50Hz - 400Hz -12dB/oct	50Hz-400Hz -24dB/oct (5ch only)
HP	—	50Hz - 400Hz -12dB/oct	50Hz-400Hz -12dB/oct
Subsonic Filter	8Hz-40Hz -24dB/oct	—	8Hz-40Hz -24dB/oct
Bass EQ	0dB to +12dB Variable	Ch3-4: 0, +6, 12dB (Selectable)	0dB to +12dB Variable

Common Features: Input Gain adjustment 0.2V-8V (0.1V - 4V for mono) • Bass EQ • Variable Filters HP&LP • Thermal Protection • Remote Bass Knob Ready (PDR-M65 & PDR-V75 only)



Sound Solutions

Amplifiers with all-digital technology for impressive power, huge bass.



These digital powerhouses are so efficient, they're much more compact than you expect. Advanced thermal protection means you can play them loud and the music never stops.

All Digital Lineup

The X-Power series uses much of the same digital technology as the PDX series, achieving high efficiency with excellent audio performance, including low distortion, high damping factor and high S/N ratio.



Easily Upgrade Any System

Speaker Level Inputs let you connect these amps directly to factory-installed head units that do not have preamp outputs, so you can upgrade the original system with higher power and better speakers.



Common Features: Input Gain adjustment 0.2V-4V, Bass EQ, Selectable Variable Filters HP&LP (Mono amps: LP only), Speaker Level input, Thermal Management Processor. MRX-M240 is compatible with the Remote Bass Knob (RUX-KNOB).

	MRX-M240	MRX-T17
Output Channels	Mono	2 Channels
Max Power Output	4400W	350W
RMS Power Output (@14.4V 1%THD)	1 x 2400W (2Ω) 1 x 1500W (4Ω)	2 x 85W (2Ω) 2 x 55W (4Ω) 1 x 170W (4Ω)
Amplification Circuit	Class-D	Class-D



Powerful yet affordable: V-Power is back and stronger than ever!

Non Shut-Down Design

Even if you pound your music for a long time, these amps won't shut down. They use a Thermal Management Processor to make sure the heat level never gets too high. No distortion, no interruptions!



Speaker Level Inputs for System Upgrading

You can use a V-Power amp and still keep your factory system. The speaker level inputs connect directly to almost any factory radio, without the need for external converters.



Remote Control Bass Knob (RUX-KNOB)

Simply add the RUX-KNOB (sold separately) and get full control from the dash for instant bass adjustment. You also get the ability to control multiple amps from just one controller with simple telephone cord adapters. For mono amps only.



	MRV-F300	MRV-M500	MRV-M250
Output Channels	4 Channels	Mono	Mono
Max Power Output	640W	1100W	550W
RMS Power Output (@14.4V 1%THD)	4 x 75W (2Ω) 4 x 50W (4Ω)	1 x 500W (2Ω) 1 x 300W (4Ω)	1 x 250W (2Ω) 1 x 150W (4Ω)
Amplification Circuit	Class-D	Class-D	Class-D

Common Features: Input Gain adjustment 0.2V-4V, Bass EQ, Selectable Variable Filters HP&LP (Mono amps: LP only), Speaker Level input, Thermal Management Processor

Sound Solutions

Powerful choices designed to fit your car and your budget.



640W
PMX-F640
320W
PMX-T320

High Power, Great Value

Both amps deliver high output power and exceptional performance for their class. A great way to expand your sound system on a limited budget.



Uniform Power Output

The PMX amplifiers deliver extremely uniform, consistent power output at all frequencies.

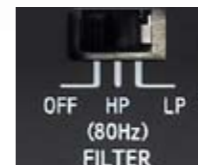


High Efficiency

The power circuit is highly efficient due to high performance MOSFETs and capacitors, plus a specially tuned toroidal transformer.

Additional Features for Greater Flexibility

Speaker-level inputs allow direct connection to head units that do not have preamp outputs, for easy upgrading of any factory system. Bass EQ lets you boost or cut bass to maximise bass performance. High pass and low pass filters are also provided for easier system configuration.



	PMX-T320	PMX-F640
Output Channels	2-channel Power Amplifier	4-channel Power Amplifier
Power (@14.4V 1%THD)	14.4V, 4Ω 2 x 50W (4Ω) 14.4V, 2Ω 2 x 75W (2Ω) BTL 1 x 150W (bridged)	4 x 50W (4Ω) 4 x 75W (2Ω) 2 x 150W (bridged)
Max Power Output	320W	640W
Function	Filter OFF/LP/HP Selectable LP 80Hz 18dB/oct HP 80Hz 18dB/oct Bass EQ 0dB/6dB/12dB Selectable	Filter OFF/LP/HP Selectable 80Hz 18dB/oct 80Hz 18dB/oct 0dB/6dB/12dB Selectable

Common Features: Input Gain adjustment 0.2V-4V, Bass EQ, Selectable Filters HP&LP, Speaker Level input



"Best Basic" value on the market, with high total max power, Bass EQ and variable crossovers.

More Than You Expect!

The two new BBX series amps are both a terrific value in a small package. With a high-efficiency design based on the PMX series, they deliver clean power for two or four-channel applications. Both offer variable Bass EQ, plus variable lowpass and highpass crossovers.

	BBX-F1200	BBX-T600
Output Channels	4 Channels	2 Channels
Power (@14.4V 1%THD)	14.4V, 4Ω 4 x 50W (4Ω) 14.4V, 2Ω 4 x 70W (2Ω) BTL 2x130W (bridged)	2 x 50W (4Ω) 2 x 70W (2Ω) 1 x 130W (bridged)
Max Power Output	600W	300W
Function	Filter Variable, OFF/LP/HP Selectable LP 50Hz - 500Hz -12dB/oct HP 50Hz - 500Hz -12dB/oct Bass EQ 0dB to +12dB Variable (3/4ch only)	Filter Variable, OFF/LP/HP Selectable 50Hz - 250Hz -12dB/oct 80Hz - 1.2kHz -12dB/oct 0dB to +12dB Variable

Common Features: Input Gain adjustment 0.2V-8V, Bass EQ, Variable Filters HP&LP, Thermal Protection



Sound Solutions

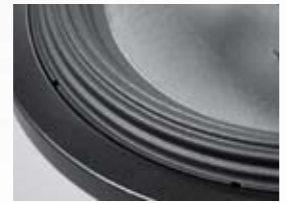
Type-R Speakers combine high power and great sound.



The Type-R series includes both component and coaxial models, both of which are highly efficient and provide good installability in a wide range of vehicles.

Impressively Powerful Bass

Using some of the same technologies as the Type-R subwoofers, such as HAMR Surround for extremely long cone excursion while maintaining maximum control, these speakers deliver deep, muscular bass that gives your sound a powerful punch.



Wave Guide Focuses the Sound

Alpine has developed a Wave Guide for the cone to further improve sound quality. Mounted over the centre cap, it prevents phase distortion of the sound waves from the diaphragm, and focuses the sound for optimum clarity. (SPR-60C/-50C only)



Superb Sound Quality

Type-R speakers employ many high quality parts and advanced designs, including a multilayer cone that is both light and strong, and a Linear Drive Magnet and Dual Gap Voice Coil structure that ensures maximum linearity for optimum sound quality.



Swivel Tweeter

Both component and coaxial models feature a Ring tweeter that swivels to improve off-axis response in less-than-ideal locations. You can aim it by hand for best imaging and staging at your listening position.



Compact for Easy Installation

Thanks to a powerful, compact neodymium magnet, small network and slim basket, the Type-R speakers are much more compact than you would expect, allowing installation in the doors of a wide range of vehicles.

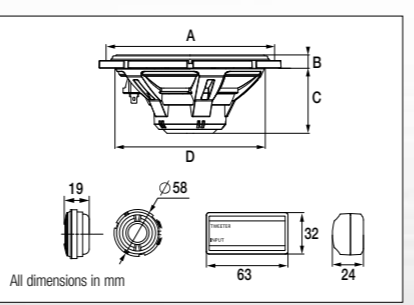


Compact Network Design

The crossover network is 75% smaller than previous types, for easier installation in door panels. It provides four levels of tweeter adjustment so you can achieve best balance between tweeter and woofer.



Model	Peak Power Handling	RMS Power Handling	Nominal Impedance	Frequency Response	Dimensions (mm)			
					A	B	C	D
SPR-60C	330W	110W	4Ω	65Hz-29kHz	156	12,1	59	136
SPR-50C	300W	100W	4Ω	70Hz-29kHz	139	9,9	57	118
SPR-60	300W	100W	4Ω	65Hz-29kHz	156	12,1	59	136
SPR-50	270W	90W	4Ω	70Hz-29kHz	139	9,9	57	118
SPR-69	300W	100W	4Ω	60Hz-29kHz	119 x 167	10,2	75	148 x 223



Sound Solutions

Type-R Subwoofers deliver powerful bass with outstanding clarity.



With their increased power handling and SPL, as well as lower distortion, we recommend you pair Type-R subs with the new PDX digital amplifiers.

The Type-R Flat subwoofer series delivers intense low-bass performance in a thin package optimised for extremely small enclosures.

Superior Bass Performance

Even though the previous Type-R subs set high standards, the new models have over 20% more motor force, delivering louder and cleaner bass with even greater accuracy. The oversized 65mm voice coil offers 35% more surface area, allowing for increased power handling.



Flatter, Yet Powerful

These subs have been engineered to offer more installation flexibility and application versatility to build the ideal sound system. With 8.3cm depth for the 25cm model and 9cm depth for the 30cm, they provide deep bass performance where it normally couldn't fit. And the 10 litre (SWR-T10) and 17 litre (SWR-T12) ideal enclosure sizes mean great bass performance can go just about anywhere in your vehicle.



New Technologies Improve Bass Sound

A new FEA Optimised Motor Structure together with exclusive High Amplitude Multi Roll (HAMR) suspension results in the highest X-max and SPL output in the category. Alpine's Compound Radius Curve pole geometry provides an ultra symmetrical magnetic field, while optimising flux density for lower distortion with higher power handling. Alpine's Radial Vented VC Heatsink and Airflow Management System helps to minimise power compression and ensures long playing time by actively moving output-robbing heat away from the voice coil.



Exclusive Alpine Technologies Ensure High Performance

The new Type-R Flat boasts no less than seven unique Alpine technologies in its industry-first design. These innovations allow it to have the output and power handling of the traditional Type-R series in less than half the depth. The design has the same DNA of the standard Type-Rs, for cleaner, deeper bass extension, faster, more accurate transients and even greater output capability.



Model	Peak Power Handling	RMS Power Handling	Nominal Impedance	Frequency Response	Dimensions (mm)	
					A	B
SWR-8D2*/-8D4**	1000W	350W	**2Ω+2Ω **4Ω+4Ω	30Hz-200Hz	176	115
SWR-10D2*/-10D4**	3000W	1000W	**2Ω+2Ω **4Ω+4Ω	26Hz-200Hz	230,5	149
SWR-12D2*/-12D4**	3000W	1000W	**2Ω+2Ω **4Ω+4Ω	24Hz-200Hz	275	161,8
SWR-1522D*/-1542D**	2000W	750W	**2Ω+2Ω **4Ω+4Ω	**18Hz-400Hz **20Hz-400Hz	348,6	234

Common Features • Kevlar-Reinforced Carbon Fibre Cone • Aluminium honeycomb • High-efficiency thermal management • High-Amplitude Multi-Roll Surround • Heavy-gauge push terminals

Model	Peak Power Handling	RMS Power Handling	Nominal Impedance	Frequency Response	Dimensions (mm)	
					A	B
SWR-T10	1800W	600W	4Ω	28Hz-200Hz	230,5	82,5
SWR-T12	1800W	600W	4Ω	26Hz-200Hz	275	88,9

Common Features • Aluminium Cone • Aluminium honeycomb • High-efficiency thermal management • High-Amplitude Multi-Roll Surround • Heavy-gauge push terminals

Recommended enclosure sizes for optimum bass output.

Type-R Recommended Enclosure	Sealed Enclosure		Vented Enclosure	
	Recommended	Recommended Volume	Round Port Dia. x L (cm)	Slot Port W x H x L (cm)
SWR-8D2/-8D4	8,5 L	19,8 L	7 x 47	6,2 x 6,2 x 47
SWR-10D2/-10D4	17 L	39,6 L	9 x 25	6 x 12 x 37
SWR-12D2/-12D4	25,5 L	53,8 L	10 x 33	11 x 9 x 51
SWR-1522D/-1542D	49,6 L	82,1 L	2 ports of 10 x 39	10 x 15 x 45

Recommended enclosure sizes for optimum bass output.

Type-R Recommended Enclosure	Sealed Enclosure		Vented Enclosure	
	Recommended	Recommended Volume	Round Port Dia. x L (cm)	Slot Port W x H x L (cm)
SWR-T10	10,0L	17,0 L	7 x 43	9 x 4 x 43
SWR-T12	17,0 L	28,3 L	10 x 34	10 x 7 x 37



Sound Solutions

Type-G provides excellent sound with high power handling.



High Power Handling

The new Type-G Series of component and coaxial speakers are designed and built to handle high power levels.



Ease of Installation

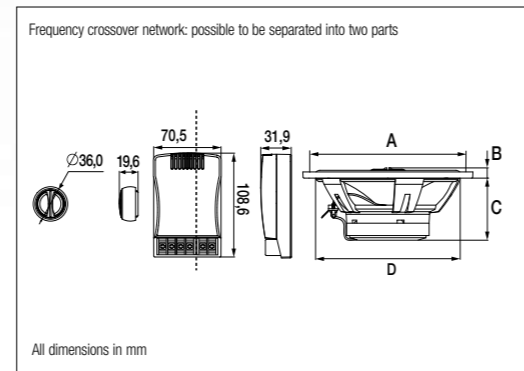
Snap Fit tweeter, swivel mount, and flush install bracket make installation easy. The crossover network is small and can be separated into two parts to further reduce size and allow use of factory wiring.



Good Sound Quality

They deliver good sound quality, due to a soft dome tweeter, square voice coil wire with Kapton VC bobbin and an audio tuned capacitor.

	Peak Power Handling	RMS Power Handling	Nominal Impedance	Frequency Response	Dimensions (mm)			
					A	B	C	D
SPG-17CS COMPONENT 2-WAY SPEAKER	280W	70W	4Ω	68Hz-20kHz	155,6	7,6	60,2	140,3
SPG-13CS COMPONENT 2-WAY SPEAKER	250W	65W	4Ω	65Hz-20kHz	139,3	8,2	42,2	109,9
SPG-17C2 COAXIAL 2-WAY SPEAKER	240W	60W	4Ω	68Hz-20kHz	155,6	9,9	60,2	140,3
SPG-13C2 COAXIAL 2-WAY SPEAKER	200W	50W	4Ω	82Hz-20kHz	139,3	16,5	42,2	109,9
SPG-69C3 COAXIAL 3-WAY SPEAKER	350W	90W	4Ω	65Hz-19kHz	167 x 119	12,2	75,6	149,9
SPG-69C2 COAXIAL 2-WAY SPEAKER	300W	75W	4Ω	65Hz-18kHz	167 x 119	12,2	75,6	149,9
SPG-10C2 COAXIAL 2-WAY SPEAKER	180W	45W	4Ω	101Hz-20kHz	117,1	13,5	42,5	90,4



Type-G Subwoofers

An excellent match for the Type-G speakers, the Type-G subwoofers combine impressive bass output with high power handling and efficiency, and at a comfortable price level!

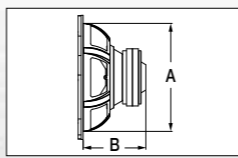


Recommended enclosure sizes for optimum bass output.

Type-G Recommended Enclosure	Sealed Enclosure		Vented Enclosure	
	Recommended	Recommended Volume	Round Port Dia. x L (cm)	Slot Port W x H x L (cm)
SWG-1244	27,8 L	40 L	8,9 x 20	35 x 1,78 x 20
SWG-1044	16,9 L	26,9 L	7,0 x 24	30 x 1,28 x 24
SWG-844	15,3 L	25 L	7,0 x 20	25 x 1,53 x 20

Find more information at www.alpine-europe.com

	Peak Power Handling	RMS Power Handling	Nominal Impedance	Frequency Response	Dimensions (mm)	
					A	B
SWG-1244 12" (30cm) SUBWOOFER	800W	250W	4Ω	28Hz-1kHz	278	169
SWG-1044 10" (25cm) SUBWOOFER	500W	150W	4Ω	33Hz-1kHz	235	141
SWG-844 8" (20cm) SUBWOOFER	400W	120W	4Ω	34Hz-1.5kHz	183	111



Sound Solutions

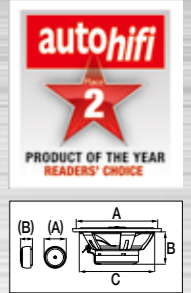
Type-E for affordable upgrading to higher performance.



Custom Fit Speaker Series

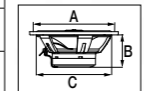
Highly efficient, these speakers can be powered from the head unit, giving you excellent full-range performance – solid bass with crisp, clear highs.

	Peak Power Handling	RMS Power Handling	Nominal Impedance	Frequency Response	Dimensions (mm)		
					A (Tweeter)	B (Tweeter)	C
SXE-1750S COMPONENT 2-WAY SPEAKER	280W	45W	4Ω	60Hz-20kHz	165 (30)	46 (17,5)	139
SXE-1350S COMPONENT 2-WAY SPEAKER	250W	40W	4Ω	60Hz-20kHz	129 (30)	48,5 (17,5)	114



The Custom Fit line are a great value for upgrading your factory system. They provide easy, do-it-yourself installation, including a complete kit with adapters, and are designed to fit in a wide range of cars with minimal installation.

	Peak Power Handling	RMS Power Handling	Nominal Impedance	Frequency Response	Dimensions (mm)		
					A	B	C
SXE-2035S COAXIAL 3-WAY SPEAKER	280W	45W	4Ω	40Hz-20kHz	198,0	74	181,6
SXE-6925S COAXIAL 2-WAY SPEAKER	280W	45W	4Ω	40Hz-20kHz	117,5 x 166,5	79,5	150 x 219
SXE-5725S COAXIAL 2-WAY SPEAKER	200W	35W	4Ω	70Hz-20kHz	102,7 x 125,5	62	126 x 183
SXE-4625S COAXIAL 2-WAY SPEAKER	150W	20W	4Ω	90Hz-20kHz	72 x 129	37	85 x 142
SXE-1725S COAXIAL 2-WAY SPEAKER	220W	40W	4Ω	60Hz-20kHz	165	46	139
SXE-1325S COAXIAL 2-WAY SPEAKER	200W	35W	4Ω	70Hz-20kHz	129	48,5	114
SXE-1025S COAXIAL 2-WAY SPEAKER	180W	25W	4Ω	100Hz-20kHz	100	43	92
SXE-0825S COAXIAL 2-WAY SPEAKER	150W	20W	4Ω	120Hz-16kHz	87	35,5	72



Type-E Subwoofers

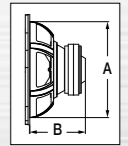
Excellent bass performance plus high power handling and efficiency at a surprisingly affordable price.

Recommended enclosure sizes for optimum bass output.

Type-E Recommended Enclosure	Sealed Enclosure		Vented Enclosure	
	Recommended	Recommended Volume	Round Port Dia. x L (cm)	Slot Port W x H x L (cm)
SWE-1244E	62 L	77 L	12 x 28	35 x 3,2 x 28
SWE-1044E	37 L	52 L	10 x 22	30 x 2,6 x 22

Find more information at www.alpine-europe.com

	Peak Power Handling	RMS Power Handling	Nominal Impedance	Frequency Response	Dimensions (mm)	
					A	B
SWE-1244E 12" (30cm) SUBWOOFER	650W	200W	4Ω	30Hz-500Hz	280	131
SWE-1044E 10" (25cm) SUBWOOFER	500W	150W	4Ω	33Hz-800Hz	232	116



This compact, high performance tweeter is a very efficient way to upgrade all existing sound systems.

Crystal Clear and Powerful High Frequency Sound

Designed for easy installation, the SPS-110TW will greatly enhance your system's treble response with the additional benefit of directional control. This is a high-value upgrade for any sound system.



SPS-110TW COMPONENT TWEETER

- 300W Peak • 100W RMS • Impedance: 4 Ω
- Output diameter: 2" (5.1cm) circle
- Mounting depth: 3/4" (1.8 cm) • Frequency Response: 1 kHz to 22 kHz



Sound Solutions

Satisfy your urge for bass with these high-performance subwoofers. Choice of powered or non-powered, large or small sizes.

Sound Solutions

These easy-to-install boxes are bass powerhouses.



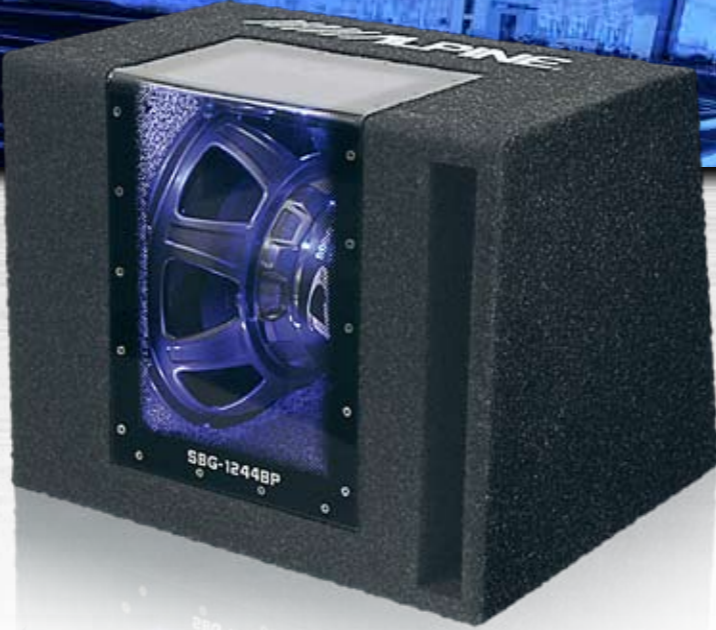
Subwoofer Boxes

These ready-to-use subwoofers are easy to install, so you can upgrade your sound system with just a few simple steps. Their massive bass power makes listening to music much more enjoyable.

SBG-1244BP

800W Power Handling

12" (30cm) READY TO USE BAND PASS SUBWOOFER BOX (4Ω)
• 250W RMS • 12" Type-G Subwoofer • Frequency Response: 28Hz - 200Hz • Acrylic window with blue illumination



SBE-1244BR

650W Power Handling

12" (30cm) READY TO USE BASS REFLEX SUBWOOFER BOX (4Ω)
• 200W RMS • 12" Type-E Subwoofer • Frequency Response 30Hz - 500Hz • Stitched Alpine Logo • High quality bass reflex box



SBE-1044BR

500W Power Handling

10" (25cm) READY TO USE BASS REFLEX SUBWOOFER BOX (4Ω)
• 150W RMS • 10" Type-E Subwoofer • Frequency Response 33Hz - 800Hz • Stitched Alpine Logo • High quality bass reflex box



SWE-3200

320W Peak Power

12" (30cm) AMPLIFIED SUBWOOFER BOX
• Featuring 12" (30cm) SWE-1244E subwoofer, Built-in PMX-T320 amplifier (320W Max Power, 150W RMS @14.4V 1%THD) • High quality bass reflex box with acrylic window and removable port plug • Heavy duty subwoofer grill



SWT-12S4

1000W Peak Power

12" (30cm) BASS REFLEX SUBWOOFER TUBE (4Ω)
• 300W RMS • 12" High-Performance Subwoofer • Frequency Response 28Hz - 200Hz • Stitched Alpine Logo • Including Installation Brackets and Belts • Heavy Duty Subwoofer Grill • Dimensions: W324mm x D660mm



SWE-815

150W Peak Power

8" (20cm) POWERED SUBWOOFER BOX
• Low Pass Filter: 50Hz-125Hz (-12dB/oct) • Phase Selector Switch • Stitched Alpine Logo • Wired Remote Control • Port Plug included • High quality bass reflex box



SBG-12KIT

800W Peak Power

HIGH PERFORMANCE SUBWOOFER PACKAGE
• 250W RMS • 12" Type-G Subwoofer • Frequency Response: 28Hz - 200Hz • MRP-M350 V-POWER Digital Amplifier • High quality bass reflex box • High quality wiring kit



SBG-1244BR

800W Power Handling

12" (30cm) READY TO USE BASS REFLEX SUBWOOFER BOX (4Ω)
• 250W RMS • 12" Type-G Subwoofer • Frequency Response: 28Hz - 200Hz • Acrylic window with blue illumination

SBG-1044BR

500W Power Handling

10" (25cm) READY TO USE BASS REFLEX SUBWOOFER BOX (4Ω)
• 150W RMS • 10" Type-G Subwoofer • Frequency Response: 30Hz - 200Hz • Acrylic window with blue illumination

SBG-844BR

400W Power Handling

8" (20cm) READY TO USE BASS REFLEX SUBWOOFER BOX (4Ω)
• 120W RMS • 8" Type-G Subwoofer • Frequency Response: 34Hz - 200Hz • Acrylic window with blue illumination



PWE-V80

160W Peak Power

8" (20cm) POWERED SUBWOOFER BOX
• Built-in Amplifier (160W MAX Power) • Low Pass Filter: 50Hz-100Hz (-12dB/oct) • Phase Selector Switch • Sealed Die-Cast Housing for stealth installation • Speaker-level and RCA Inputs • Wired Remote Control • Power Cables and Installation Brackets Included • Dimensions: W342mm x D238mm x H80mm • Weight: 5kg



SWE-1200

150W Peak Power

8" (20cm) POWERED SUBWOOFER BOX
• Band Pass Type • Low Pass Filter: 50Hz-125Hz (-12dB/oct) • Phase Selector Switch • Small size bandpass enclosure • For stealth installation • External amplifier unit • Wired Remote Control • Dimensions: W280mm x D226mm x H75mm



Join the Alpine Community

Good news for Alpine fans! Now you can keep up to date with the latest Alpine news and product information via Facebook and YouTube.

Bookmark the Alpine Sites!

Alpine Facebook sites are available in many European countries. If your country has one, become a fan and get lots of hot information about Alpine events and products. Alpine Electronics Europe has its own YouTube channel where you can watch interesting product videos and helpful installation videos. Check it out at: <http://www.youtube.com/user/AlpineEurope>



Alpine Renault Clio RS

Our latest democar showcases a small, affordable system with big power!

Here's more proof that small packages can deliver big results. The Renault Clio RS houses an Alpine system with small yet powerful V-Power amps and Type-G subs and speakers. You won't believe how much sound it can output! All audio settings are done with the TuneIt app and can be downloaded from the cloud within the app. The car will be featured at various motor shows and events. Check it out and see how Alpine gives new meaning to "powerful yet affordable."



Download This Catalogue to Your iPad



Now you can get the convenience of having all the Alpine product information on your iPad. Plus take advantage of handy interactive features while viewing online. Of course, you can also view it offline. Download it from the App Store, it's free!



- ✓ Select from 12 language versions.
- ✓ View in portrait or landscape mode.
- ✓ Pinch to zoom in/out and flick to turn pages.
- ✓ Easily jump to any section or page.
- ✓ Add bookmarks and use the search function.
- ✓ When online, tap a product to get additional images.
- ✓ Share on Facebook and Twitter.
- ✓ Check out product videos on YouTube.

ACCESSORIES

Category	Model No.	Description	Application
MirrorLink™	KCU-230NK	USB to Micro-USB Connection Cable for MirrorLink™ compatible phones	For connecting a MirrorLink™ compatible smartphone
	KCE-237B	FULL SPEED TO MINI-JACK ADAPTER	For connecting a portable MP3 player or similar to CDA-117R1, NA-D511R/D800R and IDA-X3xxx • Also recommended for KCE-400BT
AUX Input	KCE-236B	FULL SPEED TO MINI-JACK	For connecting a portable MP3 player or similar to CDE-9882R, CDE-9880R and IVA-D106R
	KCA-121B	ADAPTER AI-NET AUX IN RCA	Allows RCA Audio connection to AI-NET connector for CDA-117R1, NA-D511R/D800R, IDA-X3xxx and CDA-137BT
IMPRINT	PXA-H100	IMPRINT Audioprocessor/ BassEngine Pro upgrade	For IMPRINT Ready Units
	KTX-H100	IMPRINT SOUND CALIBRATION KIT	Includes calibration CD-ROM, high-end microphone and cables. For IMPRINT calibration of PXA-H100.
Remote Control	KRE-502E	REMOTE EYE FOR SWRC INPUT	Remote Eye for connection to SWRC input for Headunits which are not ready for remote control
	RUE-4202	INFRARED REMOTE CONTROL	For remote control ready CD Tuners and Digital Media Receivers
Changer Applications	RUX-KNOB	REMOTE CONTROL BASS KNOB	Bass remote control knob for use with PDX-M6, PDX-M12, PDX-V9, MRX-M240, PDR-M65, PDR-V75, MRV-M500 and MRV-M250
	KAE-116C	6D SEE-THROUGH MAGAZINE	For CHA-S634, -S624, -S614, -S604, -S605, CHM-S630, -S620, -S611 and VPA-S001.
DAB ANTENNA	KAE-158C	6D MAGAZINE	DVD magazine for DHA-S690, DHA-S680P, and KAE-116C compatible
	KAE-220DA	DAB ANTENNA	DAB Antenna for CDE-136BT, INE-W925R, X800D-U and INE-W987D
ANTENNA	KAE-100GPS	GPS ANTENNA FOR ICS-X8	External GPS Antenna for improved reception when using smartphones with MirrorLink™ for navigation.
	KAE-202DV	DVB-T ANTENNA	DVB-T Screen Antenna (foil type) for TUE-T1500V
	KAE-205DV	DVB-T ANTENNA	DVB-T Screen Antenna for TUE-T1500V
	KAE-210DV	DVB-T ANTENNA	DVB-T Screen Antenna with rods for TUE-T1500V

Note: At the time of printing this catalogue, video playback from iPhone/iPod touch with Lightning connector was not supported.

Music Playback and App Direct mode are supported. Check our website for updates on this issue.

Further Information: More details and images of each accessory can be found on our website. Check out the "Accessories" section in the "Product" area.

iPhone, iPod, iPod classic, iPod nano, and iPod touch are trademarks of Apple Inc., registered in the U.S. and other countries. "Made for iPod," and "Made for iPhone," mean that an electronic accessory has been designed to connect specifically to iPod, or iPhone, respectively and has been certified by the developer to meet Apple performance standard. Apple is not responsible for the operation of this device or its compliance with safety and regulatory standards. Please note that the use of this accessory with iPod, or iPhone may affect wireless performance. DivX, DivX Certified and associated logos are trademarks of DivX, Inc. and are used under license. The Bluetooth® word mark and logos are registered trademarks owned by Bluetooth® SIG, Inc. and any use of such marks by Alpine Electronics, Inc. is under license. The Parrot® Trademarks appearing on this document are the sole and exclusive property of Parrot® S.A. © 2012 Nokia. All rights reserved. Windows Media and the Windows logo are trademarks, or registered trademarks of Microsoft Corporation in the United States and/or other countries. The words "Dolby Digital", "Pro Logic", "Dolby", and the "Double-D" symbol are trademarks of Dolby Laboratories. "DTS" and "DTS Digital Surround" are registered trademarks of DTS, Inc. and "DTS 2.0 + Digital Out" is a trademark of DTS, Inc. Traffic information in the UK provided by Trafficmaster Ltd. V-Traffic information in France provided by Mediamobile company. © 2013 HERE. Audyssey MultEQ is a registered trademark of Audyssey Laboratories Inc. vTuner™ is a trademark of Nothing Else Matters Software, Ltd. Design, specifications and availability of Alpine products are subject to change without notice. No liability for printing errors is assumed. Alpine catalogues are printed on chlorine-free paper.

HEAD UNIT STEP CHARTS

1-DIN CD Head Units (2014 / 2013 models)

	CDE-178BT	CDE-177BT	CDE-175R	CDE-185BT	CDE-183BT	CDE-182R	CDE-181R/RM/RR	CDE-180R/RM/RR
USB Connection (1000mA)	Rear	Front	Rear	Front	Front	Front	Front	Front
MP3 / WMA / AAC Playback								
SWRC Ready								
AUX Input	Rear	Front	Rear	Front	Front	Front	Front	Front
Works with iPhone / iPod								
Bass Engine	Pro	Pro	Pro	SQ	SQ	SQ	SQ	SQ
App Direct Mode								
Start-Stop Unaffected								
Built-in Bluetooth® (BT Plus)								
TuneIt App Ready	Phone/Android	Phone/Android	iPhone	Phone/Android	Phone/Android			
9-Band Parametric EQ								
24-Bit DAC								
6-Channel Digital Time Correction								
High Resolution LCD Display								
Vehicle Display Interface Ready								
Main Illumination Color	● ● ● ● ●	● ● ● ● ●	● ● ● ● ●	Variable	● ● ● ● ●	● ● ● ● ●	● / ● / ● / ● / ●	● / ● / ● / ● / ●
Sub Illumination Color	● ● ● ● ●	● ● ● ● ●	● ● ● ● ●	Variable	● ● ● ● ●	● ● ● ● ●	● / ● / ● / ● / ●	● / ● / ● / ● / ●
Built-in Amplifier	4x50W Max	4x50W Max	4x50W Max	4x50W Max	4x50W Max	4x50W Max	4x50W Max	4x50W Max
RCA Outputs	3 PreOuts (4V)	3 PreOuts (2V)	3 PreOuts (2V)	3 PreOuts (2V)	3 PreOuts (2V)	3 PreOuts (2V)	2 PreOuts (2V)	2 PreOuts (2V)

Drive-less Head Units (2014 / 2013 models)

	IDE-178BT	UTE-72BT	UTE-81R
USB Connection (1000mA)	Rear	Front	Front
MP3 / WMA / AAC Playback			
SWRC Ready			
AUX Input	Rear	Front	Front
Works with iPhone / iPod			
BASS ENGINE SQ			
App Direct Mode			
Built-in Bluetooth® (BT Plus)			
TuneIt App Ready	Phone/Android		
Start-Stop Unaffected			
vTuner Ready			
Flip-Down Face			
High Resolution LCD Display			
Vehicle Display Interface Ready			
24-Bit DAC			
Main Illumination Color	● ● ● ● ●	● ● ● ● ●	● ● ● ● ●
Sub Illumination Color	● ● ● ● ●	● ● ● ● ●	● ● ● ● ●
Built-in Amplifier	4x50W Max	4x50W Max	4x50W Max
RCA Outputs	3 PreOuts (4V)	2 PreOuts (2V)	—